

Recombinant Human IGF1R Protein, Myc/DDK-tagged, C13 and N15-labeled

Cat. No. IGF1R-595H **Lot. No.** (See product label)

SPECIFICATION

Product Overview	IGF1R MS Standard C13 and N15-labeled recombinant protein (NP_000866) with a C-terminal MYC/DDK tag, was expressed in HEK293 cells.
Species	Human
Source	HEK293
Description	This receptor binds insulin-like growth factor with a high affinity. It has tyrosine kinase activity. The insulin-like growth factor I receptor plays a critical role in transformation events. Cleavage of the precursor generates alpha and beta subunits. It is highly overexpressed in most malignant tissues where it functions as an anti-apoptotic agent by enhancing cell survival. Alternatively spliced transcript variants encoding distinct isoforms have been found for this gene.
Molecular Mass	154.79 kDa
AA Sequence	MKSGSGGGSP TSLWGLLFLSAALSLWPTS GEICGPGIDIRNDYQQLKRL ENCTVIEG YLHILLISKAEDYRSYRFPKLT VITEYLLLFRVAGLESLGDLFPNLT VIRGWKLFYNYAL VIFEMTNLKDIGLYNLRNITRG AIRIEKNADLCYLSTVDWSLILDAVSNNYIVGNKPPKE CGDLCPGTMEEKPMCEKTTIN NEYNYRCWTTNRCQKMCPSTCGKRACTENNECC HPECLGSCSAPDNDTACVACRH YYYAGVCPACPPNTYRFEGWRCVDRDFCANIL SAESSDSEGFVIHDGECMQECPS GFIRNGSQSMYCIPCEGPCPKVCEEEKTKTIDS V TSAQMLQGCTIFKGNLLINIRRGNNIASELENFMGLIEVVTGYVKIRHSHALVSLSFL

 Tel: 1-631-559-9269 1-516-512-3133

 Email: info@creative-biomart.com  Fax: 1-631-938-8127

 45-1 Ramsey Road, Shirley, NY 11967, USA

KNLRLILGEEQLEGNYSFYVLDNQNQLQQLWDWDHRNLTIKAGKMYFAFNPKLCVSEI
 YRMEEVTGKGRQSKGDINTRNNGERASCESDVLHFTSTTTSKNRIITWHRYPDP
 YRDLISFTVYYKEAPFKNVTEYDGGDACGSNSWNMVDVDLPPNKDVEPGILLHGLK
 PWTQYAVYVKAHTLTMVENDHIRGAKSEILYIRTNASVPSIPLDVLASNSSSQLIVK
 WNPPSLPNGNLSYYIVRWQRQPQDGYLYRHNYCSKDKIPIRKYADGTIDIEEV TENP
 KTEVCGGEKGPCCACPKTEAEKQAEKEEAERYKVFENFLHNSIFVPRPERKRRDVM
 QVANTTMSSRSRNTTAADTYNITDPEELETEYPPFFESRVDNKERTVISNLRPFTLYRI
 DIHSCNHEAEKLGCSASNFFVARTMPAEGADDIPGPVTWEPRPENSIFLKWPEPEN
 PNGLILMYEIKYGSQVEDQRECVSRQEYRKYGGAKLNRLNPGNYTARIQATSLSGN
 GSWTDPVFFYVQAKTGYENFIHLIILPVAVLLIVGGLVIMLYVFHRKRNSRLGNGVL
 YASVNPEYFSAADVVPDEWEVAREKITMSRELGGQSGFMVYEGVAKGVVKDEPE
 TRVAIKTVNEAASMRIEFLEASVMKEFNCHHVRLLGVVSQQPTLVIMELMTR
 GDLKSYLRSRPEMENNPNVLAPPSLSKMIQMAGEIADGMAYLNANKFVHRDLAARN
 CMVAEDFTVKIGDFGMTRDIYETDYRKGKGLLPVRWMSPELKDGVFTTYS DV
 WSFGVVLWEIATLAEQPYQGLSNEQVLRFMEGGLLDKPDNCPDMLFELMRMCW
 QYNPKMRPSFLEIISSIKEEMEPGFREVSFYSEENKLPEPEELDLEPENMESVPLDP
 SASSSSLPLPDRHSGHKAENGGPGVVLVLRASFDERQPYAHMNGGRKNERALPLP
 QSSTCTRTRPLEQKLISEEDLAANDILDYKDDDDKV

Purity	> 80% as determined by SDS-PAGE and Coomassie blue staining
Stability	Stable for 3 months from receipt of products under proper storage and handling conditions.
Storage	Store at -80 centigrade. Avoid repeated freeze-thaw cycles.
Concentration	50 µg/mL as determined by BCA
Storage Buffer	100 mM glycine, 25 mM Tris-HCl, pH 7.3.

 Tel: 1-631-559-9269 1-516-512-3133

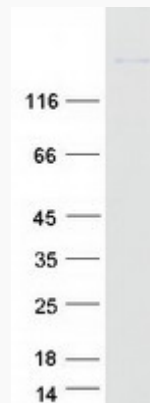
 Email: info@creative-biomart.com  Fax: 1-631-938-8127

 45-1 Ramsey Road, Shirley, NY 11967, USA

GENE INFORMATION

Gene Name	IGF1R insulin-like growth factor 1 receptor [Homo sapiens (human)]
Official Symbol	IGF1R
Synonyms	IGF1R; insulin-like growth factor 1 receptor; CD221; IGFIR; IGFR; JTK13; MGC18216; IGF-I receptor; soluble IGF1R variant 1; soluble IGF1R variant 2; insulin-like growth factor I receptor; MGC142170; MGC142172;
Gene ID	3480
mRNA Refseq	NM_000875
Protein Refseq	NP_000866
MIM	147370
UniProt ID	P08069

SDS-PAGE



Tel: 1-631-559-9269 1-516-512-3133

Email: info@creative-biomart.com Fax: 1-631-938-8127

45-1 Ramsey Road, Shirley, NY 11967, USA