

## Recombinant Human IGF2BP1 Protein, His-tagged

Cat. No. IGF2BP1-01H    Lot. No. (See product label)

### SPECIFICATION

|                         |   |
|-------------------------|---|
| <b>Product Overview</b> | Recombinant human IGF2BP1 with a N-terminal 6x histidine tag was derived from E.coli.   |
| <b>Species</b>          | Human   |
| <b>Source</b>           | E.coli  |
| <b>Description</b>      | This gene encodes a member of the insulin-like growth factor 2 mRNA-binding protein family. The protein encoded by this gene contains four K homology domains and two RNA recognition motifs. It functions by binding to the mRNAs of certain genes, including insulin-like growth factor 2, beta-actin and beta-transducin repeat-containing protein, and regulating their translation. Two transcript variants encoding different isoforms have been found for this gene. |
| <b>Form</b>             | Liquid  |
| <b>Molecular Mass</b>   | 65.6 kDa  |
| <b>Purity</b>           | > 90%   |
| <b>Applications</b>     | ELISA, EIA, protein-protein interaction studies, WB, DB, IP, Protein Array  |
| <b>Usage</b>            | This product is furnished for LABORATORY RESEARCH USE ONLY.<br>Not for diagnostic or therapeutic use.   |

 Tel: 1-631-559-9269    1-516-512-3133

 Email: [info@creative-biomart.com](mailto:info@creative-biomart.com)     Fax: 1-631-938-8127

 45-1 Ramsey Road, Shirley, NY 11967, USA

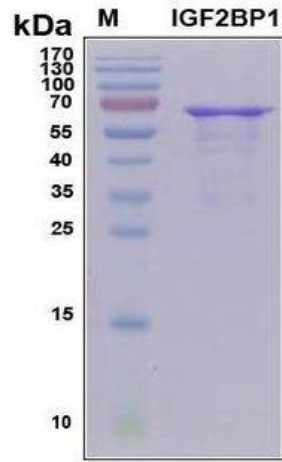
|                         |   |
|-------------------------|---|
| <b>Storage</b>          | Upon arrival, the protein may be stored for 2 weeks at 4 centigrade. For long term storage, it is recommended to store at -20 centigrade or -80 centigrade in appropriate aliquots. Avoid repeated freeze-thaw cycles.  |
| <b>Storage Buffer</b>   | Supplied as a 0.2 um filtered solution in 50 mM Tris-HCl (pH 7.4), 0.3 M NaCl, 50 mM imidazole, 6 M urea.   |
| <b>Shipping</b>         | Ice packs   |
| <b>GENE INFORMATION</b> |   |
| <b>Gene Name</b>        | IGF2BP1 insulin like growth factor 2 mRNA binding protein 1 [ Homo sapiens (human) ]  |
| <b>Official Symbol</b>  | IGF2BP1   |
| <b>Synonyms</b>         | IGF2BP1; insulin like growth factor 2 mRNA binding protein 1; IMP1; ZBP1; CRDBP; IMP-1; CRD-BP; VICKZ1; insulin-like growth factor 2 mRNA-binding protein 1; IGF-II mRNA-binding protein 1; IGF2 mRNA-binding protein 1; VICKZ family member 1; ZBP-1; coding region determinant-binding protein; insulin-like growth factor 2 mRNA binding protein 1 deltaN CRDBP; zipcode-binding protein 1 |
| <b>Gene ID</b>          | 10642   |
| <b>mRNA Refseq</b>      | NM_006546   |
| <b>Protein Refseq</b>   | NP_006537   |
| <b>MIM</b>              | 608288  |
| <b>UniProt ID</b>       | Q9NZI8  |

 Tel: 1-631-559-9269 1-516-512-3133

 Email: [info@creative-biomart.com](mailto:info@creative-biomart.com)  Fax: 1-631-938-8127

 45-1 Ramsey Road, Shirley, NY 11967, USA

SDS-PAGE Image



 Tel: 1-631-559-9269 1-516-512-3133

 Email: [info@creative-biomart.com](mailto:info@creative-biomart.com)  Fax: 1-631-938-8127

 45-1 Ramsey Road, Shirley, NY 11967, USA