

Recombinant Human IGF2BP2 protein, His & T7-tagged

Cat. No. IGF2BP2-1862H Lot. No. (See product label)

SPECIFICATION

Product Overview	Recombinant Human IGF2BP2 aa. (Ser141~Pro384 (Accession # Q9Y6M1)) fused with N-terminal His & T7 tag was produced in E. coli cells.
Species	Human
Source	E.coli
ProteinLength	Ser141~Pro384
Description	This gene encodes a protein that binds the 5' UTR of insulin-like growth factor 2 (IGF2) mRNA and regulates its translation. It plays an important role in metabolism and variation in this gene is associated with susceptibility to diabetes. Alternative splicing and promoter usage results in multiple transcript variants. Related pseudogenes are found on several chromosomes.
Form	Freeze-dried powder
Molecular Mass	Predicted Molecular Mass: 30.5kDa
Endotoxin	<1.0EU per 1ug (determined by the LAL method)
Purity	>95%
Applications	SDS-PAGE; WB; ELISA; IP.

 Tel: 1-631-559-9269 1-516-512-3133

 Email: info@creative-biomart.com  Fax: 1-631-938-8127

 45-1 Ramsey Road, Shirley, NY 11967, USA

Stability	The thermal stability is described by the loss rate. The loss rate was determined by accelerated thermal degradation test, that is, incubate the protein at 37°C for 48h, and no obvious degradation and precipitation were observed. The loss rate is less than 5% within the expiration date under appropriate storage condition.
Storage	Avoid repeated freeze/thaw cycles. Store at 2-8°C for one month. Aliquot and store at -80°C for 12 months.
Storage buffer	Supplied as lyophilized form in PBS, pH7.4, containing 5% sucrose, 0.01% sarcosyl.
Reconstitution	Reconstitute in sterile PBS, pH7.2-pH7.4.
Isoelectric Point	6.9

GENE INFORMATION

Gene Name	IGF2BP2 insulin like growth factor 2 mRNA binding protein 2 [Homo sapiens (human)]
Official Symbol	IGF2BP2
Synonyms	IGF2BP2; insulin like growth factor 2 mRNA binding protein 2; IMP2; IMP-2; VICKZ2; insulin-like growth factor 2 mRNA-binding protein 2; IGF-II mRNA-binding protein 2; IGF2 mRNA-binding protein 2; VICKZ family member 2
Gene ID	10644
mRNA Refseq	NM_001007225.2
Protein Refseq	NP_001007226.1

 Tel: 1-631-559-9269 1-516-512-3133

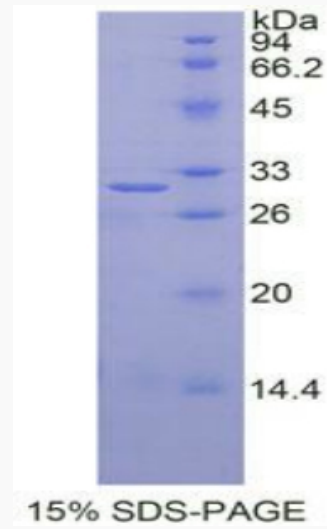
 Email: info@creative-biomart.com  Fax: 1-631-938-8127

 45-1 Ramsey Road, Shirley, NY 11967, USA

UniProt ID

Q9Y6M1

SDS-PAGE



 Tel: 1-631-559-9269 1-516-512-3133

 Email: info@creative-biomart.com  Fax: 1-631-938-8127

 45-1 Ramsey Road, Shirley, NY 11967, USA