

Recombinant Human IGF2BP2 Protein (Met1-Thr220), N-T7 and C-His tagged

Cat. No. IGF2BP2-2618H **Lot. No.** (See product label)

SPECIFICATION

Product Overview	Recombinant human IGF2BP2 (Met1-Thr220) protein fused with the N-terminal T7 Tag, C-terminal His tag was expressed in E. coli.
Species	Human
Source	E.coli
ProteinLength	Met1-Thr220
Molecular Mass	24.2 kDa
Purity	>90 % as determined by SDS-PAGE.
Notes	For research use only.
Storage	Use a manual defrost freezer and avoid repeated freeze thaw cycles. Store at 2 to 8 centigrade for one week. Store at -20 to -80 centigrade for twelve months from the date of receipt.
Storage Buffer	Supplied as solution form in PBS or lyophilized from PBS.
Reconstitution	Reconstitute in sterile water for a stock solution.
Shipping	In general, proteins are provided as lyophilized powder/frozen liquid. They are

 Tel: 1-631-559-9269 1-516-512-3133

 Email: info@creative-biomart.com  Fax: 1-631-938-8127

 45-1 Ramsey Road, Shirley, NY 11967, USA

shipped out with dry ice/blue ice unless customers require otherwise.

GENE INFORMATION

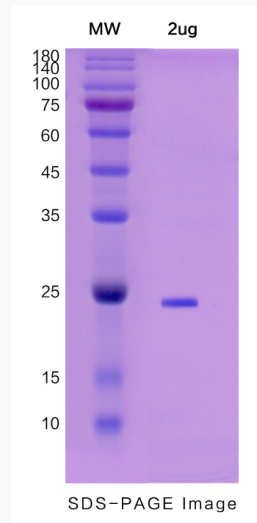
Gene Name	IGF2BP2 insulin-like growth factor 2 mRNA binding protein 2 [Homo sapiens (human)]
Official Symbol	IGF2BP2
Synonyms	IGF2BP2; insulin-like growth factor 2 mRNA binding protein 2; insulin-like growth factor 2 mRNA-binding protein 2; IGF II mRNA binding protein 2; IMP 2; VICKZ family member 2; IGF2 mRNA-binding protein 2; IGF-II mRNA-binding protein 2; hepatocellular carcinoma autoantigen p62; p62; IMP2; IMP-2; VICKZ2;
Gene ID	10644
mRNA Refseq	NM_001007225
Protein Refseq	NP_001007226
MIM	608289
UniProt ID	Q9Y6M1

 Tel: 1-631-559-9269 1-516-512-3133

 Email: info@creative-biomart.com  Fax: 1-631-938-8127

 45-1 Ramsey Road, Shirley, NY 11967, USA

SDS-PAGE



 Tel: 1-631-559-9269 1-516-512-3133

 Email: info@creative-biomart.com  Fax: 1-631-938-8127

 45-1 Ramsey Road, Shirley, NY 11967, USA