

## Recombinant Human IGF2BP2 Protein, GST-tagged

Cat. No. IGF2BP2-5150H Lot. No. (See product label)

### SPECIFICATION

<b>Product Overview</b>	Human IMP-2 full-length ORF ( AAH21290, 1 a.a. - 598 a.a.) recombinant protein with GST-tag at N-terminal.
<b>Species</b>	Human
<b>Source</b>	Wheat Germ
<b>ProteinLength</b>	1-598 a.a.
<b>Description</b>	This gene encodes a member of the IGF-II mRNA-binding protein (IMP) family. The protein encoded by this gene contains several four KH domains and two RRM domains. It functions by binding to the 5' UTR of the insulin-like growth factor 2 (IGF2) mRNA and regulating IGF2 translation. Alternate transcriptional splice variants, encoding different isoforms, have been characterized. [provided by RefSeq]
<b>Molecular Mass</b>	91.52 kDa
<b>AA Sequence</b>	MNKLYIGNLSPAVTADDLRQLFGDRKLPLAGQVLLKSGYAFVDYDPDQNWAI RAIETL SGKVELHGKIMEVDYSVSKKLR SRKIQRNIPPHLQWEVLDGLLAQYGTVENVEQVN TDTETAVVNVTYATREEAKIAMEKLSGHQFENYSFKISYIPDEEVSSPSPQRAQRG DHSSREQGHAPGGTSQARQIDFPLRLIVPTQFVGAIIGKEGLTIKNITKQTQSRVDIHR KENSGAAEKPVTIHATPEGTSEACRMILEIMQKEADETKLAEIPLKILAHNGLVGR LI GKEGRNLKKIEHETGKITISSLQDLSIYNPERTITVKGTVEACASAEIEIMKKLREAFE NDMLAVNQQANLIPGLNLSALGIFSTGLSVLSPAGPRGAPPAAPYHPFTTHSGYFS SLYPHHQFGPFPHHHSYPEQEIVNLFIPTQAVGAIIGKKGGAHIKQLARFAGASIKIAPA

 Tel: 1-631-559-9269 1-516-512-3133

 Email: [info@creative-biomart.com](mailto:info@creative-biomart.com)  Fax: 1-631-938-8127

 45-1 Ramsey Road, Shirley, NY 11967, USA

EGPDVSERMVIITGPPEAQFKAQGRIFGKLKEENFFNPKEEVKLEAHIRVPSSTAGRV  
 IGKGGKTVNELQNLTSAEVIVPRDQTPDENEEVIVRIIGHFFASQTAQRKIREIVQQVK  
 QQEQKYPQGVASQRSK

<b>Applications</b>	Enzyme-linked Immunoabsorbent Assay Western Blot (Recombinant protein) Antibody Production Protein Array
<b>Notes</b>	Best use within three months from the date of receipt of this protein.
<b>Storage</b>	Store at -80 centigrade. Aliquot to avoid repeated freezing and thawing.
<b>Storage Buffer</b>	50 mM Tris-HCl, 10 mM reduced Glutathione, pH=8.0 in the elution buffer.

## GENE INFORMATION

<b>Gene Name</b>	IGF2BP2 insulin-like growth factor 2 mRNA binding protein 2 [ Homo sapiens ]
<b>Official Symbol</b>	IGF2BP2
<b>Synonyms</b>	IGF2BP2; insulin-like growth factor 2 mRNA binding protein 2; insulin-like growth factor 2 mRNA-binding protein 2; IGF II mRNA binding protein 2; IMP 2; VICKZ family member 2; IGF2 mRNA-binding protein 2; IGF-II mRNA-binding protein 2; hepatocellular carcinoma autoantigen p62; p62; IMP2; IMP-2; VICKZ2;
<b>Gene ID</b>	10644
<b>mRNA Refseq</b>	NM_001007225
<b>Protein Refseq</b>	NP_001007226

 Tel: 1-631-559-9269 1-516-512-3133

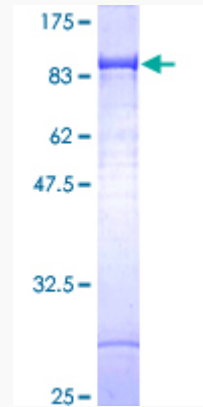
 Email: [info@creative-biomart.com](mailto:info@creative-biomart.com)  Fax: 1-631-938-8127

 45-1 Ramsey Road, Shirley, NY 11967, USA

**MIM** 608289

**UniProt ID** Q9Y6M1

**Quality Control  
Testing**



12.5% SDS-PAGE Stained with Coomassie Blue

 Tel: 1-631-559-9269 1-516-512-3133

 Email: [info@creative-biomart.com](mailto:info@creative-biomart.com)  Fax: 1-631-938-8127

 45-1 Ramsey Road, Shirley, NY 11967, USA