

## Recombinant Human IGF2R protein, His-tagged

**Cat. No.** IGF2R-290H    **Lot. No.** (See product label)

### SPECIFICATION

<b>Product Overview</b>	Recombinant Human IGF2R(NP_000867.3)(Asn2167~Ala2442), fused with N-terminal His Tag, was expressed in E. coli.
<b>Species</b>	Human
<b>Source</b>	E.coli
<b>ProteinLength</b>	Asn2167~Ala2442
<b>Description</b>	This gene encodes a receptor for both insulin-like growth factor 2 and mannose 6-phosphate. The binding sites for each ligand are located on different segments of the protein. This receptor has various functions, including in the intracellular trafficking of lysosomal enzymes, the activation of transforming growth factor beta, and the degradation of insulin-like growth factor 2. Mutation or loss of heterozygosity of this gene has been association with risk of hepatocellular carcinoma. The orthologous mouse gene is imprinted and shows exclusive expression from the maternal allele; however, imprinting of the human gene may be polymorphic, as only a minority of individuals showed biased expression from the maternal allele (PMID:8267611).
<b>Form</b>	20mM Tris, 150mM NaCl, pH8.0, containing 1mM EDTA, 1mM DTT, 0.01% SKL, 5% Trehalose and Proclin300.
<b>Molecular Mass</b>	33kDa as determined by SDS-PAGE reducing conditions.
<b>AA Sequence</b>	NGDNYLYEIQ LSSITSSRNPACSGANICQVKPNDQHFSRKVGTSDKTKYYLQDGDLD

 Tel: 1-631-559-9269    1-516-512-3133

 Email: [info@creative-biomart.com](mailto:info@creative-biomart.com)     Fax: 1-631-938-8127

 45-1 Ramsey Road, Shirley, NY 11967, USA

VVFASSSKCGKDKTKSVSSTIFFHCDPLVEDGIPEFSHETADCQYLFSWYTSAVCPL  
 GVGFDSENPDDGQMHKGLSERSQAVGAVLSLLVALTCCLLALLLYKKERRETVIS  
 KLTTCCRRSSNVSYKYSKVNKEEETDENETEWLMEEIQLPPPRQGKEGQENGHITT  
 KSVKALSSLHGDDQDSEDEVLTIPKVKVHSGRGAGAESSHPVRNAQSNA

**Endotoxin** < 1.0EU per 1g (determined by the LAL method)

**Purity** > 95%

**Applications** Positive Control; Immunogen; SDS-PAGE; WB.  
 If bio-activity of the protein is needed, please check active protein.

**Notes** The kit is designed for research use only, we will not be responsible for any issue if the kit was used in clinical diagnostic or any other procedures.

**Stability** The thermal stability is described by the loss rate. The loss rate was determined by accelerated thermal degradation test, that is, incubate the protein at 37°C for 48h, and no obvious degradation and precipitation were observed. The loss rate is less than 5% within the expiration date under appropriate storage condition.

**Storage** Avoid repeated freeze/thaw cycles. Store at 2-8°C for one month. Aliquot and store at -80°C for 12 months.

**Concentration** 200g/mL

**Reconstitution** Reconstitute in 20mM Tris, 150mM NaCl (pH8.0) to a concentration of 0.1-1.0 mg/mL.  
 Do not vortex.

## GENE INFORMATION

**Gene Name** IGF2R insulin like growth factor 2 receptor [ Homo sapiens (human) ]

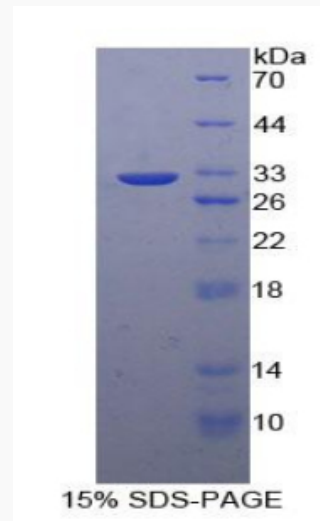
 Tel: 1-631-559-9269 1-516-512-3133

 Email: [info@creative-biomart.com](mailto:info@creative-biomart.com)  Fax: 1-631-938-8127

 45-1 Ramsey Road, Shirley, NY 11967, USA

<b>Official Symbol</b>	IGF2R
<b>Synonyms</b>	MPR1; MPRI; CD222; CIMPR; M6P-R; MPR300; CI-M6PR; MPR 300; M6P/IGF2R
<b>Gene ID</b>	3482
<b>mRNA Refseq</b>	NM_000876.4
<b>Protein Refseq</b>	NP_000867.3
<b>MIM</b>	147280
<b>UniProt ID</b>	P11717

**SDS-PAGE of IGF2R-290H**



Tel: 1-631-559-9269 1-516-512-3133

Email: [info@creative-biomart.com](mailto:info@creative-biomart.com) Fax: 1-631-938-8127

45-1 Ramsey Road, Shirley, NY 11967, USA