

Recombinant Human IGF2R protein, His-Avi-tagged, Biotinylated

Cat. No. IGF2R-342H **Lot. No.** (See product label)

SPECIFICATION

Product Overview	Biotinylated Recombinant Human IGF2R Protein(P11717)(Glu47-Met1508) is expressed from HEK293 with His tag and Avi tag at the C-terminal.
Species	Human
Source	HEK293
ProteinLength	Glu47-Met1508
Form	Lyophilized from 0.22µm filtered solution in PBS (pH 7.4). Normally 8% trehalose is added as protectant before lyophilization.
Molecular Mass	The protein has a predicted MW of 164.90 kDa. Due to glycosylation, the protein migrates to 165-200 kDa based on Tris-Bis PAGE result.
Endotoxin	Less than 1EU per µg by the LAL method.
Purity	> 95% as determined by Tris-Bis PAGE > 95% as determined by HPLC
Storage	-20 to -80°C for 12 months as supplied from date of receipt. -20 to -80°C for 3-6 months in unopened state after reconstitution. 2-8°C for 2-7 days after reconstitution. Recommend to aliquot the protein into smaller quantities for optimal storage. Please

 Tel: 1-631-559-9269 1-516-512-3133

 Email: info@creative-biomart.com  Fax: 1-631-938-8127

 45-1 Ramsey Road, Shirley, NY 11967, USA

avoid freeze-thaw cycles.

Reconstitution

Centrifuge tubes before opening. Reconstituting to a concentration more than 100 µg/ml is recommended. Dissolve the lyophilized protein in distilled water.

Conjugation

Biotin

GENE INFORMATION

Gene Name

IGF2R insulin-like growth factor 2 receptor [Homo sapiens]

Official Symbol

IGF2R

Synonyms

IGF2R; insulin-like growth factor 2 receptor; cation-independent mannose-6-phosphate receptor; cation independent mannose 6 phosphate receptor; CD222; CIMPR; M6PR; MPR1; MPRI

Gene ID

3482

mRNA Refseq

NM_000876

Protein Refseq


NP_000867

MIM

147280

UniProt ID

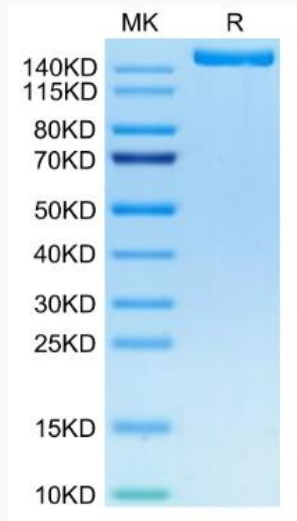
P11717

 Tel: 1-631-559-9269 1-516-512-3133

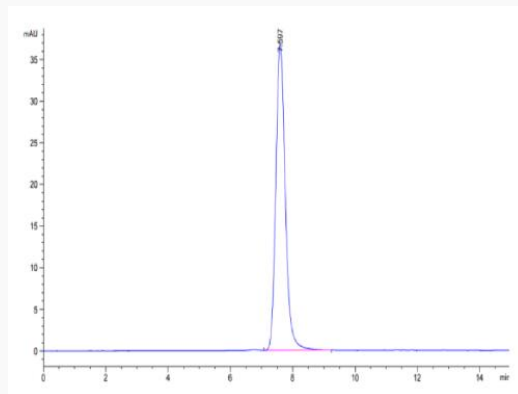
 Email: info@creative-biomart.com  Fax: 1-631-938-8127

 45-1 Ramsey Road, Shirley, NY 11967, USA

Tris-Bis PAGE



SEC-HPLC



 Tel: 1-631-559-9269 1-516-512-3133

 Email: info@creative-biomart.com  Fax: 1-631-938-8127

 45-1 Ramsey Road, Shirley, NY 11967, USA