

## Recombinant Human IGF2R protein, His-Avi-tagged

**Cat. No.** IGF2R-344H    **Lot. No.** (See product label)

### SPECIFICATION

<b>Product Overview</b>	Recombinant Human IGF2R Protein(P11717)(Glu47-Lys468) is expressed from HEK293 with His tag and Avi tag at the C-terminal.
<b>Species</b>	Human
<b>Source</b>	HEK293
<b>ProteinLength</b>	Glu47-Lys468
<b>Form</b>	Lyophilized from 0.22µm filtered solution in PBS (pH 7.4). Normally 8% trehalose is added as protectant before lyophilization.
<b>Molecular Mass</b>	The protein has a predicted MW of 50.50 kDa. Due to glycosylation, the protein migrates to 55-65 kDa based on Tris-Bis PAGE result.
<b>Endotoxin</b>	Less than 1EU per µg by the LAL method.
<b>Purity</b>	> 95% as determined by Tris-Bis PAGE > 95% as determined by HPLC
<b>Storage</b>	-20 to -80°C for 12 months as supplied from date of receipt. -20 to -80°C for 3-6 months in unopened state after reconstitution. 2-8°C for 2-7 days after reconstitution. Recommend to aliquot the protein into smaller quantities for optimal storage. Please avoid freeze-thaw cycles.

 Tel: 1-631-559-9269    1-516-512-3133

 Email: [info@creative-biomart.com](mailto:info@creative-biomart.com)     Fax: 1-631-938-8127

 45-1 Ramsey Road, Shirley, NY 11967, USA

**Reconstitution** Centrifuge tubes before opening. Reconstituting to a concentration more than 100 µg/ml is recommended. Dissolve the lyophilized protein in distilled water.

## GENE INFORMATION

**Gene Name** IGF2R insulin-like growth factor 2 receptor [ Homo sapiens ]

**Official Symbol** IGF2R

**Synonyms** IGF2R; insulin-like growth factor 2 receptor; cation-independent mannose-6-phosphate receptor; cation independent mannose 6 phosphate receptor; CD222; CIMPR; M6PR; MPR1; MPRI

**Gene ID** 3482

**mRNA Refseq** NM\_000876

**Protein Refseq** NP\_000867

**MIM** 147280

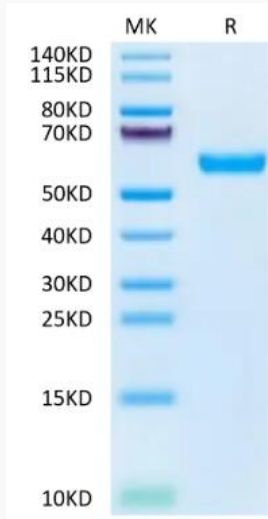
**UniProt ID** P11717

 Tel: 1-631-559-9269 1-516-512-3133

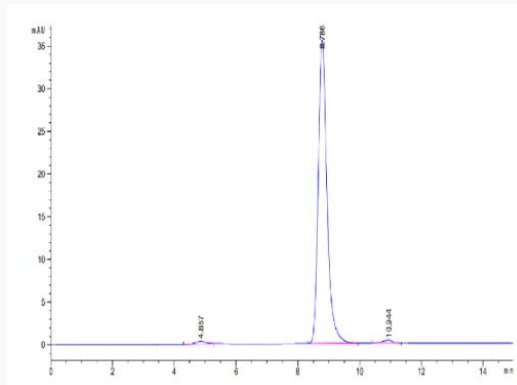
 Email: [info@creative-biomart.com](mailto:info@creative-biomart.com)  Fax: 1-631-938-8127

 45-1 Ramsey Road, Shirley, NY 11967, USA

**Tris-Bis PAGE**



**SEC-HPLC**



 Tel: 1-631-559-9269 1-516-512-3133

 Email: [info@creative-biomart.com](mailto:info@creative-biomart.com)  Fax: 1-631-938-8127

 45-1 Ramsey Road, Shirley, NY 11967, USA