

Recombinant Human IGFBP1 Protein

Cat. No. IGFBP1-0013H Lot. No. (See product label)

SPECIFICATION

Product Overview	Recombinant Human IGFBP1 Protein without tag was expressed in HEK293.
Species	Human
Source	HEK293
Description	<p>This gene is a member of the insulin-like growth factor binding protein (IGFBP) family and encodes a protein with an IGFBP N-terminal domain and a thyroglobulin type-I domain. The encoded protein, mainly expressed in the liver, circulates in the plasma and binds both insulin-like growth factors (IGFs) I and II, prolonging their half-lives and altering their interaction with cell surface receptors. This protein is important in cell migration and metabolism. Low levels of this protein may be associated with impaired glucose tolerance, vascular disease and hypertension in human patients.</p>
Applications	ELISA, CLIA, CG
Notes	For research use only, not for use in diagnostic procedure.
Storage	Short term (up to 7 days) store at 2–8 centigrade. Long term, store at - 20 centigrade. Avoid multiple freeze/thaw cycles.
Storage Buffer	Supplied as a 0.2 µm filtered solution of PBS, pH7.4

GENE INFORMATION

 Tel: 1-631-559-9269 1-516-512-3133

 Email: info@creative-biomart.com  Fax: 1-631-938-8127

 45-1 Ramsey Road, Shirley, NY 11967, USA

Gene Name	IGFBP1 insulin-like growth factor binding protein 1 [Homo sapiens (human)]
Official Symbol	IGFBP1
Synonyms	IGFBP1; insulin-like growth factor binding protein 1; IBP1; insulin-like growth factor-binding protein 1; AFBP; alpha pregnancy associated endometrial globulin; amniotic fluid binding protein; binding protein 25; binding protein 26; binding protein 28; growth hormone independent binding protein; hIGFBP 1; IGF binding protein 1; IGF BP25; placental protein 12; PP12; IBP-1; IGFBP-1; binding protein-25; binding protein-26; binding protein-28; IGF-binding protein 1; growth hormone independent-binding protein; alpha-pregnancy-associated endometrial globulin; IGF-BP25; hIGFBP-1;
Gene ID	3484
mRNA Refseq	NM_000596
Protein Refseq	NP_000587
MIM	146730
UniProt ID	P08833

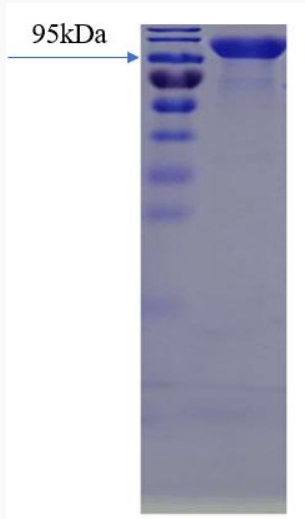
 Tel: 1-631-559-9269 1-516-512-3133

 Email: info@creative-biomart.com  Fax: 1-631-938-8127

 45-1 Ramsey Road, Shirley, NY 11967, USA



SDS-PAGE



Tel: 1-631-559-9269 1-516-512-3133

Email: info@creative-biomart.com Fax: 1-631-938-8127

45-1 Ramsey Road, Shirley, NY 11967, USA