

## Active Recombinant Human IGFBP-1 Protein (26-259aa)

Cat. No. IGFBP1-03H Lot. No. (See product label)

### SPECIFICATION

<b>Product Overview</b>	Recombinant human IGFBP1 (26-259aa) without tag was expressed in HEK293 cell and purified by using conventional chromatography techniques.
<b>Species</b>	Human
<b>Source</b>	HEK293
<b>ProteinLength</b>	26-259aa
<b>Description</b>	This gene is a member of the insulin-like growth factor binding protein (IGFBP) family and encodes a protein with an IGFBP N-terminal domain and a thyroglobulin type-I domain. The encoded protein, mainly expressed in the liver, circulates in the plasma and binds both insulin-like growth factors (IGFs) I and II, prolonging their half-lives and altering their interaction with cell surface receptors. This protein is important in cell migration and metabolism. Low levels of this protein may be associated with impaired glucose tolerance, vascular disease and hypertension in human patients.
<b>Form</b>	Liquid
<b>Bio-activity</b>	Measured by its ability to inhibit proliferation using MCF-7 human breast cancer cells in the presence of Human IGF-1. The ED50 range $\leq 3 \mu\text{g/mL}$ .
<b>Molecular Mass</b>	25.2 kDa (234aa)
<b>AA Sequence</b>	APWQCAPCSAEKLALCPPVSASCSEVTRSAGCGCCPMCALPLGAACGVATARCAR

 Tel: 1-631-559-9269 1-516-512-3133

 Email: [info@creative-biomart.com](mailto:info@creative-biomart.com)  Fax: 1-631-938-8127

 45-1 Ramsey Road, Shirley, NY 11967, USA

GLSCRALPGEQQPLHALTRGQGACVQESDASAPHAEEAGSPESPESTEITEEELLDD  
 NFHLMAPSEEDHSILWDAISTYDGSKALHVTNIKKWKEPCRIELYRVVESLAKAQETS  
 GEEISKFYLPNCNKNGFYHSRQCETSMDGEAGLCWCVYPWNGKRIPGSPEIRGDP  
 NCQIYFNVQN

**Endotoxin** < 1 EU/μg of protein (determined by LAL method)

**Purity** > 95% by SDS-PAGE

**Applications** SDS-PAGE, Bioactivity

**Notes** Note: For research use only. This product is not intended or approved for human, diagnostics or veterinary use.

**Storage** Can be stored at +2 to +8 centigrade for 1 week. For long term storage, aliquot and store at -20 to -80 centigrade. Avoid repeated freezing and thawing cycles.

**Concentration** 0.5 mg/mL (determined by Absorbance at 280nm)

**Storage Buffer** Phosphate-Buffered Saline (pH 7.4) containing 10% glycerol

## GENE INFORMATION

**Gene Name** [IGFBP1 insulin like growth factor binding protein 1 \[ Homo sapiens \(human\) \]](#)

**Official Symbol** [IGFBP1](#)

**Synonyms** IGFBP1; insulin like growth factor binding protein 1; AFBP; IBP1; PP12; IGF-BP25; hIGFBP-1; insulin-like growth factor-binding protein 1; IBP-1; IGF-binding protein 1; IGFBP-1; alpha-pregnancy-associated endometrial globulin; amniotic fluid binding protein; binding protein-25; binding protein-26; binding protein-28; growth hormone

 Tel: 1-631-559-9269 1-516-512-3133

 Email: [info@creative-biomart.com](mailto:info@creative-biomart.com)  Fax: 1-631-938-8127

 45-1 Ramsey Road, Shirley, NY 11967, USA

independent-binding protein; placental protein 12

**Gene ID** 3484

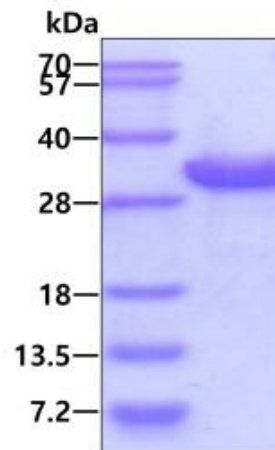
**mRNA Refseq** NM\_000596

**Protein Refseq** NP\_000587

**MIM** 146730

**UniProt ID** P08833

**SDS-PAGE**



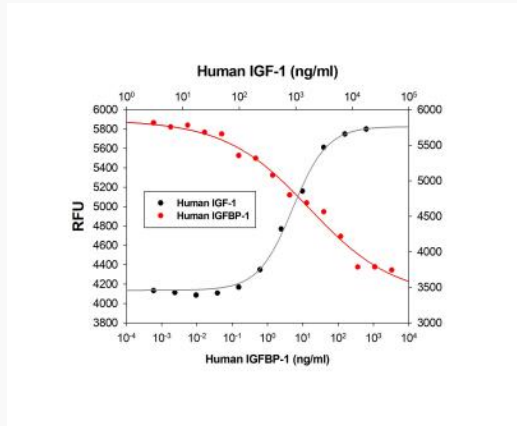
3 µg by SDS-PAGE under reducing condition and visualized by coomassie blue stain

 Tel: 1-631-559-9269 1-516-512-3133

 Email: [info@creative-biomart.com](mailto:info@creative-biomart.com)  Fax: 1-631-938-8127

 45-1 Ramsey Road, Shirley, NY 11967, USA

Activity



 Tel: 1-631-559-9269 1-516-512-3133

 Email: [info@creative-biomart.com](mailto:info@creative-biomart.com)  Fax: 1-631-938-8127

 45-1 Ramsey Road, Shirley, NY 11967, USA