

## Active Recombinant Human IGFBP1 protein, His-tagged

Cat. No. IGFBP1-1249H Lot. No. (See product label)

### SPECIFICATION

<b>Product Overview</b>	Recombinant Human IGFBP-1 Protein is produced by HEK293 cells expression system. The target protein is expressed with sequence (Ala26-Asn259) of human IGFBP-1 (Accession #NP_000587.1) fused with a 6xHis tag at the C-terminus.
<b>Species</b>	Human
<b>Source</b>	HEK293
<b>ProteinLength</b>	Ala26-Asn259
<b>Form</b>	Lyophilized from a 0.22 µm filtered solution of PBS, pH 7.4.
<b>Bio-activity</b>	Measured by its binding ability in a functional ELISA. Immobilized Recombinant Human IGFBP-1 at 5 µg/mL (100 µL/well) can bind Recombinant Human IGF1 with a linear range of 44-176 ng/mL.
<b>Molecular Mass</b>	29 kDa
<b>Endotoxin</b>	< 0.1 EU/µg of the protein by LAL method.
<b>Purity</b>	> 97% by SDS-PAGE.
<b>Storage</b>	Store the lyophilized protein at -20°C to -80 °C for long term. After reconstitution, the protein solution is stable at -20 °C for 3 months, at 2-8 °C for up to 1 week.

 Tel: 1-631-559-9269 1-516-512-3133

 Email: [info@creative-biomart.com](mailto:info@creative-biomart.com)  Fax: 1-631-938-8127

 45-1 Ramsey Road, Shirley, NY 11967, USA

**Reconstitution** Reconstitute to a concentration of 0.1-0.5 mg/mL in sterile distilled water.

## GENE INFORMATION

**Gene Name** IGFBP1 insulin-like growth factor binding protein 1 [ Homo sapiens ]

**Official Symbol** IGFBP1

**Synonyms**

IGFBP1; insulin-like growth factor binding protein 1; IBP1; insulin-like growth factor-binding protein 1; AFBP; alpha pregnancy associated endometrial globulin; amniotic fluid binding protein; binding protein 25; binding protein 26; binding protein 28; growth hormone independent binding protein; hIGFBP 1; IGF binding protein 1; IGF BP25; placental protein 12; PP12; IBP-1; IGFBP-1; binding protein-25; binding protein-26; binding protein-28; IGF-binding protein 1; growth hormone independent-binding protein; alpha-pregnancy-associated endometrial globulin; IGF-BP25; hIGFBP-1;

**Gene ID** 3484

**mRNA Refseq** NM\_000596

**Protein Refseq** NP\_000587

**MIM** 146730

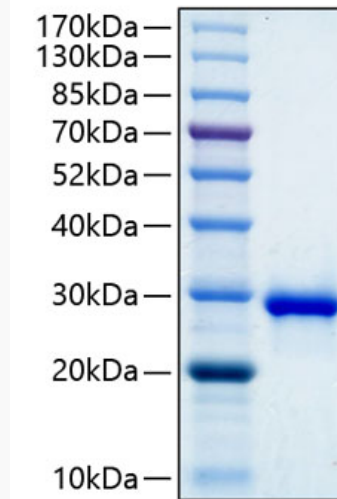
**UniProt ID** P08833

 Tel: 1-631-559-9269 1-516-512-3133

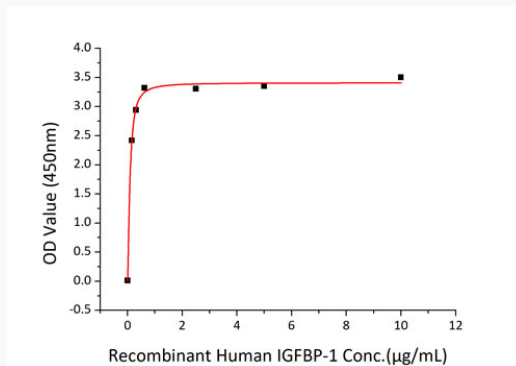
 Email: [info@creative-biomart.com](mailto:info@creative-biomart.com)  Fax: 1-631-938-8127

 45-1 Ramsey Road, Shirley, NY 11967, USA

**SDS-PAGE**



**Activity**



 Tel: 1-631-559-9269 1-516-512-3133

 Email: [info@creative-biomart.com](mailto:info@creative-biomart.com)  Fax: 1-631-938-8127

 45-1 Ramsey Road, Shirley, NY 11967, USA