

Recombinant Human IGFBP1 Protein (Ala26-Lys162), C-His tagged

Cat. No. IGFBP1-2488H Lot. No. (See product label)

SPECIFICATION

Product Overview	Recombinant human IGFBP1 (Ala26~ Lys162) protein fused with the C-terminal His tag was expressed in E. coli.
Species	Human
Source	E.coli
ProteinLength	Ala26-Lys162
Molecular Mass	17.59 kDa
Purity	>90 % as determined by SDS-PAGE.
Notes	For research use only.
Storage	Use a manual defrost freezer and avoid repeated freeze thaw cycles. Store at 2 to 8 centigrade for one week. Store at -20 to -80 centigrade for twelve months from the date of receipt.
Storage Buffer	Supplied as solution form in PBS, pH 7.5 with 0.2mM β -Met or lyophilized from PBS, pH 7.5 with 0.2mM β -Met.
Reconstitution	Reconstitute in sterile water for a stock solution.

 Tel: 1-631-559-9269 1-516-512-3133

 Email: info@creative-biomart.com  Fax: 1-631-938-8127

 45-1 Ramsey Road, Shirley, NY 11967, USA

Shipping

In general, proteins are provided as lyophilized powder/frozen liquid. They are shipped out with dry ice/blue ice unless customers require otherwise.

GENE INFORMATION

Gene Name [IGFBP1 insulin-like growth factor binding protein 1 \[Homo sapiens \(human\) \]](#)

Official Symbol [IGFBP1](#)

Synonyms

IGFBP1; insulin-like growth factor binding protein 1; IBP1; insulin-like growth factor-binding protein 1; AFBP; alpha pregnancy associated endometrial globulin; amniotic fluid binding protein; binding protein 25; binding protein 26; binding protein 28; growth hormone independent binding protein; hIGFBP 1; IGF binding protein 1; IGF BP25; placental protein 12; PP12; IBP-1; IGFBP-1; binding protein-25; binding protein-26; binding protein-28; IGF-binding protein 1; growth hormone independent-binding protein; alpha-pregnancy-associated endometrial globulin; IGF-BP25; hIGFBP-1;

Gene ID [3484](#)

mRNA Refseq [NM_000596](#)

Protein Refseq [NP_000587](#)

MIM [146730](#)

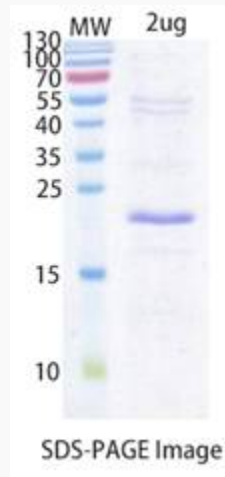
UniProt ID [P08833](#)

 Tel: 1-631-559-9269 1-516-512-3133

 Email: info@creative-biomart.com  Fax: 1-631-938-8127

 45-1 Ramsey Road, Shirley, NY 11967, USA

SDS-PAGE



 Tel: 1-631-559-9269 1-516-512-3133

 Email: info@creative-biomart.com  Fax: 1-631-938-8127

 45-1 Ramsey Road, Shirley, NY 11967, USA