

## Recombinant Human IGFBP1 Protein (Met1-Asn259), N-His tagged

**Cat. No.** IGFBP1-2490H    **Lot. No.** (See product label)

### SPECIFICATION

<b>Product Overview</b>	Recombinant human IGFBP1 (Met1~Asn259) protein fused with the N-terminal His tag was expressed in Mammalian cells.
<b>Species</b>	Human
<b>Source</b>	Mammalian Cells
<b>ProteinLength</b>	Met1-Asn259
<b>Molecular Mass</b>	26.19 kDa
<b>Purity</b>	>90 % as determined by SDS-PAGE.
<b>Notes</b>	For research use only.
<b>Storage</b>	Use a manual defrost freezer and avoid repeated freeze thaw cycles. Store at 2 to 8 centigrade for one week. Store at -20 to -80 centigrade for twelve months from the date of receipt.
<b>Storage Buffer</b>	Supplied as solution form in PBS, pH 7.5 or lyophilized from PBS, pH 7.5.
<b>Reconstitution</b>	Reconstitute in sterile water for a stock solution.
<b>Shipping</b>	In general, proteins are provided as lyophilized powder/frozen liquid. They are

 Tel: 1-631-559-9269    1-516-512-3133

 Email: [info@creative-biomart.com](mailto:info@creative-biomart.com)     Fax: 1-631-938-8127

 45-1 Ramsey Road, Shirley, NY 11967, USA

shipped out with dry ice/blue ice unless customers require otherwise.

## GENE INFORMATION

**Gene Name** [IGFBP1 insulin-like growth factor binding protein 1 \[ Homo sapiens \(human\) \]](#)

**Official Symbol** [IGFBP1](#)

**Synonyms** [IGFBP1](#); [insulin-like growth factor binding protein 1](#); [IBP1](#); [insulin-like growth factor-binding protein 1](#); [AFBP](#); [alpha pregnancy associated endometrial globulin](#); [amniotic fluid binding protein](#); [binding protein 25](#); [binding protein 26](#); [binding protein 28](#); [growth hormone independent binding protein](#); [hIGFBP 1](#); [IGF binding protein 1](#); [IGF BP25](#); [placental protein 12](#); [PP12](#); [IBP-1](#); [IGFBP-1](#); [binding protein-25](#); [binding protein-26](#); [binding protein-28](#); [IGF-binding protein 1](#); [growth hormone independent-binding protein](#); [alpha-pregnancy-associated endometrial globulin](#); [IGF-BP25](#); [hIGFBP-1](#);

**Gene ID** [3484](#)

**mRNA Refseq** [NM\\_000596](#)

**Protein Refseq** [NP\\_000587](#)

**MIM** [146730](#)

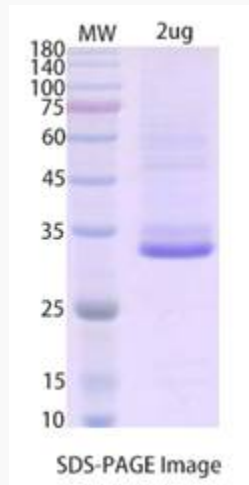
**UniProt ID** [P08833](#)

 Tel: 1-631-559-9269 1-516-512-3133

 Email: [info@creative-biomart.com](mailto:info@creative-biomart.com)  Fax: 1-631-938-8127

 45-1 Ramsey Road, Shirley, NY 11967, USA

**SDS-PAGE**



 Tel: 1-631-559-9269 1-516-512-3133

 Email: [info@creative-biomart.com](mailto:info@creative-biomart.com)  Fax: 1-631-938-8127

 45-1 Ramsey Road, Shirley, NY 11967, USA