

## Recombinant Human IGFBP1 protein, His-tagged

**Cat. No.** IGFBP1-7433H **Lot. No.** (See product label)

### SPECIFICATION

<b>Product Overview</b>	Recombinant Human IGFBP1 protein(81-259 aa), fused with N-terminal His tag, was expressed in E.coli.
<b>Species</b>	Human
<b>Source</b>	E.coli
<b>ProteinLength</b>	81-259 aa
<b>Form</b>	The purified protein was lyophilized from sterile phosphate-buffered saline (PBS: 58 mM Na <sub>2</sub> HPO <sub>4</sub> , 17 mM NaH <sub>2</sub> PO <sub>4</sub> , 68 mM NaCl, pH 7.4). Prior to lyophilization, 5% (w/v) trehalose and 5% (w/v) mannitol were incorporated as cryoprotective excipients.
<b>AASequence</b>	GLSCRALPGEQQPLHALTRGQGACVQESDASAPHAEEAGSPESPESTEITEEELLN NFHLMAPSEEDHSIPWDAISTYDGSKALHVTNIKKWKEPCRIELYRVVESLAKAQETS GEEISKFYLPNCNKNNGFYHSRQCETSMDGEAGLCWCVYPWNGKRIPGSPEIRGDP NCQIYFNVQN
<b>Purity</b>	85%, by SDS-PAGE with Coomassie Brilliant Blue staining.
<b>Storage</b>	Store at 2-8°C for 1-2 weeks. Aliquot and store at -20°C to -80°C for up to 3 months, reconstitution with sterile water and addition of an equal volume of glycerol. Avoid repeat freeze-thaw cycles.

 Tel: 1-631-559-9269 1-516-512-3133

 Email: [info@creative-biomart.com](mailto:info@creative-biomart.com)  Fax: 1-631-938-8127

 45-1 Ramsey Road, Shirley, NY 11967, USA

**Reconstitution**

Dissolve the product in 200 µl sterile water to achieve a working concentration of 0.25 g/µl. If experimental compatibility allows, mix the aqueous solution with an equal volume of glycerol (1:1 ratio) after initial reconstitution.

**GENE INFORMATION**
**Gene Name**

IGFBP1 insulin-like growth factor binding protein 1 [ Homo sapiens ]

**Official Symbol**

IGFBP1

**Synonyms**

IGFBP1; insulin-like growth factor binding protein 1; IBP1; insulin-like growth factor-binding protein 1; AFBP; alpha pregnancy associated endometrial globulin; amniotic fluid binding protein; binding protein 25; binding protein 26; binding protein 28; growth hormone independent binding protein; hIGFBP 1; IGF binding protein 1; IGF BP25; placental protein 12; PP12; IBP-1; IGFBP-1; binding protein-25; binding protein-26; binding protein-28; IGF-binding protein 1; growth hormone independent-binding protein; alpha-pregnancy-associated endometrial globulin; IGF-BP25; hIGFBP-1;

**Gene ID**

3484

**mRNA Refseq**

NM\_000596

**Protein Refseq**

NP\_000587

**MIM**

146730

**UniProt ID**

P08833

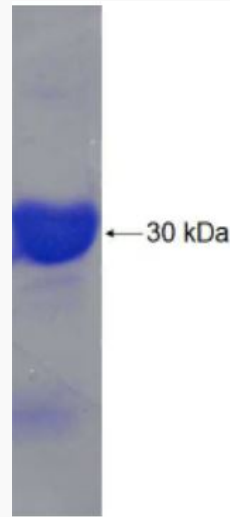
 Tel: 1-631-559-9269 1-516-512-3133

 Email: [info@creative-biomart.com](mailto:info@creative-biomart.com)  Fax: 1-631-938-8127

 45-1 Ramsey Road, Shirley, NY 11967, USA



SDS-PAGE



Tel: 1-631-559-9269 1-516-512-3133

Email: [info@creative-biomart.com](mailto:info@creative-biomart.com) Fax: 1-631-938-8127

45-1 Ramsey Road, Shirley, NY 11967, USA