

Recombinant Human IGFBP1 protein, GST-tagged

Cat. No. IGFBP1-7434H Lot. No. (See product label)

SPECIFICATION

Product Overview	Recombinant Human IGFBP1 protein(81-259 aa), fused with N-terminal GST tag, was expressed in E.coli.
Species	Human
Source	E.coli
ProteinLength	81-259 aa
Form	The purified protein was lyophilized from sterile phosphate-buffered saline (PBS: 58 mM Na ₂ HPO ₄ , 17 mM NaH ₂ PO ₄ , 68 mM NaCl, pH 8.0). Prior to lyophilization, 5% (w/v) trehalose and 5% (w/v) mannitol were incorporated as cryoprotective excipients.
AASequence	GLSCRALPGEQQPLHALTRGQGACVQESDASAPHAEEAGSPESPESTEITEEELLN NFHLMAPSEEDHSIPWDAISTYDGSKALHVTNIKKWKEPCRIELYRVVESLAKAQETS GEEISKFYLPNCNKNNGFYHSRQCETSMDGEAGLCWCVYPWNGKRIPGSPEIRGDP NCQIYFNVQN
Purity	85%, by SDS-PAGE with Coomassie Brilliant Blue staining.
Storage	Store at 2-8°C for 1-2 weeks. Aliquot and store at -20°C to -80°C for up to 3 months, reconstitution with sterile water and addition of an equal volume of glycerol. Avoid repeat freeze-thaw cycles.

 Tel: 1-631-559-9269 1-516-512-3133

 Email: info@creative-biomart.com  Fax: 1-631-938-8127

 45-1 Ramsey Road, Shirley, NY 11967, USA

Reconstitution

Dissolve the product in 200 µl sterile water to achieve a working concentration of 0.25 g/µl. If experimental compatibility allows, mix the aqueous solution with an equal volume of glycerol (1:1 ratio) after initial reconstitution.

GENE INFORMATION

Gene Name

IGFBP1 insulin-like growth factor binding protein 1 [Homo sapiens]

Official Symbol

IGFBP1

Synonyms

IGFBP1; insulin-like growth factor binding protein 1; IBP1; insulin-like growth factor-binding protein 1; AFBP; alpha pregnancy associated endometrial globulin; amniotic fluid binding protein; binding protein 25; binding protein 26; binding protein 28; growth hormone independent binding protein; hIGFBP 1; IGF binding protein 1; IGF BP25; placental protein 12; PP12; IBP-1; IGFBP-1; binding protein-25; binding protein-26; binding protein-28; IGF-binding protein 1; growth hormone independent-binding protein; alpha-pregnancy-associated endometrial globulin; IGF-BP25; hIGFBP-1;

Gene ID

3484

mRNA Refseq

NM_000596

Protein Refseq

NP_000587

MIM

146730

UniProt ID

P08833

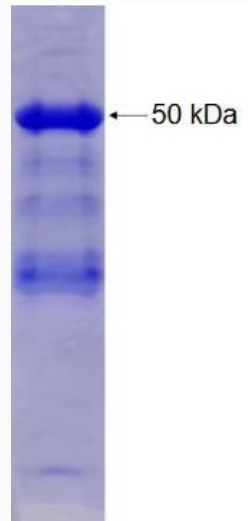
 Tel: 1-631-559-9269 1-516-512-3133

 Email: info@creative-biomart.com  Fax: 1-631-938-8127

 45-1 Ramsey Road, Shirley, NY 11967, USA



SDS-PAGE



Tel: 1-631-559-9269 1-516-512-3133

Email: info@creative-biomart.com Fax: 1-631-938-8127

45-1 Ramsey Road, Shirley, NY 11967, USA