

# Recombinant Rhesus macaque IGFBP1 protein, His-tagged

Cat. No. IGFBP1-822R Lot. No. (See product label)

## SPECIFICATION

<b>Product Overview</b>	Recombinant Rhesus macaque IGFBP1 (Ala48-Asn281) protein was fused to His-tag at C-terminus and expressed in human 293 cells (HEK293).
<b>Species</b>	Rhesus macaque
<b>Source</b>	HEK293
<b>Protein Length</b>	Ala48-Asn281
<b>Description</b>	Insulin-like growth factor-binding protein 1 (IGFBP1) is also known as placental protein 12 (PP12), which contains one IGFBP N-terminal domain and one thyroglobulin type-1 domain. IGFBP1 can bind both insulin-like growth factors (IGFs) I and II and circulates in the plasma. Binding of IGFBP1 can prolong the half-life of the IGFs and alter their interaction with cell surface receptors. Furthermore, IGFBP1 can promote cell migration. Alternate transcriptional splice variants, encoding different isoforms, have been characterized.
<b>Predicted N Terminal</b>	Ala48
<b>Form</b>	Lyophilized from 0.22 µm filtered solution in PBS, pH7.4, 10% trehalose.
<b>Molecular Mass</b>	The protein has a calculated MW of 27.2 kDa. The protein migrates as 35 kDa under reducing (R) condition (SDS-PAGE).
<b>Endotoxin</b>	Less than 1.0 EU per µg by the LAL method.

 Tel: 1-631-559-9269 1-516-512-3133

 Email: [info@creative-biomart.com](mailto:info@creative-biomart.com)  Fax: 1-631-938-8127

 45-1 Ramsey Road, Shirley, NY 11967, USA

<b>Purity</b>	>98% as determined by SDS-PAGE.
<b>Storage</b>	<p>For long term storage, the product should be stored at lyophilized state at -20 centigrade or lower.</p> <p>Please avoid repeated freeze-thaw cycles.</p> <p>This product is stable after storage at:</p> <p>-20 to -70 centigrade for 12 months in lyophilized state;</p> <p>-70 centigrade for 3 months under sterile conditions after reconstitution.</p>
<b>Reconstitution</b>	It is recommended that sterile water be added to the vial to prepare a stock solution of 0.2 ug/ul. Centrifuge the vial at 4°C before opening to recover the entire contents.

## GENE INFORMATION

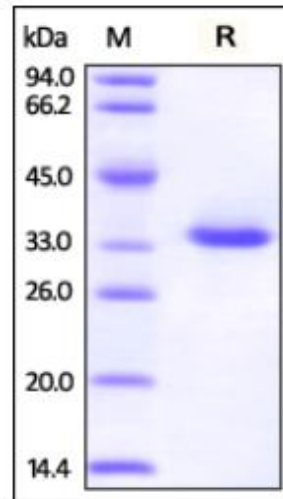
<b>Gene Name</b>	IGFBP1
<b>Official Symbol</b>	IGFBP1
<b>Synonyms</b>	AFBP; IBP1; PP12; IGF-BP25; hIGFBP-1
<b>Gene ID</b>	696994
<b>mRNA Refseq</b>	XM_001085935.4
<b>Protein Refseq</b>	XP_001085935.2
<b>UniProt ID</b>	A0A1D5QTL3

 Tel: 1-631-559-9269 1-516-512-3133

 Email: [info@creative-biomart.com](mailto:info@creative-biomart.com)  Fax: 1-631-938-8127

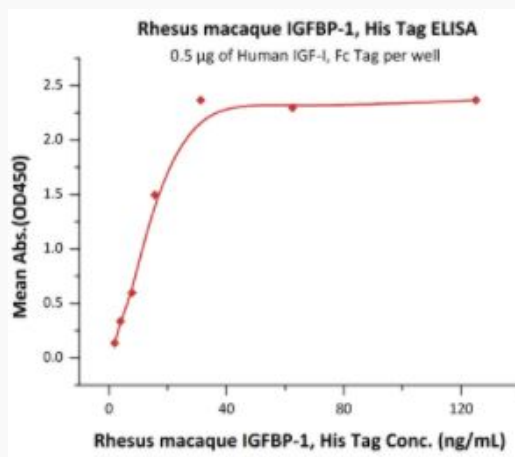
 45-1 Ramsey Road, Shirley, NY 11967, USA

**SDS-PAGE of  
IGFBP1-822R**



Rhesus macaque IGFBP-1, His Tag on SDS-PAGE under reducing (R) condition. The gel was stained overnight with Coomassie Blue. The purity of the protein is greater than 98%.

**Bioactivity-ELISA of  
IGFBP1-822R**



Immobilized Human IGF-I, Fc Tag at 5 µg/mL (100 µL/well) can bind Rhesus macaque IGFBP-1, His Tag with a linear range of 2-31 ng/mL (QC tested).

Tel: 1-631-559-9269 1-516-512-3133

Email: [info@creative-biomart.com](mailto:info@creative-biomart.com) Fax: 1-631-938-8127

45-1 Ramsey Road, Shirley, NY 11967, USA