

# Recombinant Full Length Human IGFBP2 Protein, C-Flag-tagged

**Cat. No.** IGFBP2-1059HFL    **Lot. No.** (See product label)

## SPECIFICATION

<b>Product Overview</b>	Recombinant Full Length Human IGFBP2 Protein, fused to Flag-tag at C-terminus, was expressed in Mammalian cells.
<b>Species</b>	Human
<b>Source</b>	Mammalian Cells
<b>Description</b>	The protein encoded by this gene is one of six similar proteins that bind insulin-like growth factors I and II (IGF-I and IGF-II). The encoded protein can be secreted into the bloodstream, where it binds IGF-I and IGF-II with high affinity, or it can remain intracellular, interacting with many different ligands. High expression levels of this protein promote the growth of several types of tumors and may be predictive of the chances of recovery of the patient. Several transcript variants, one encoding a secreted isoform and the others encoding nonsecreted isoforms, have been found for this gene.
<b>Form</b>	25 mM Tris HCl, pH 7.3, 100 mM glycine, 10% glycerol.
<b>Molecular Mass</b>	35 kDa
<b>AA Sequence</b>	MLPRVGC PALPLPPP LLLPLLLLLL GASGGGG GARAEV LFRCP PCTPER LAACG PPPVAPPA AAVAAV AGGAR MP CAELV REPGCG CCSV CARLEGEACGVYTPRCGQG LRCYPHPGSELPLQALVMGEGTCEKRRDA EYGASPEQVADNGDDHSEGGLVENH VDSTMNMLGGGGSAGRKPLKSGMKELAVFREKVTEQHRQMKGKGGK HHLGLEEPK

 Tel: 1-631-559-9269    1-516-512-3133

 Email: [info@creative-biomart.com](mailto:info@creative-biomart.com)     Fax: 1-631-938-8127

 45-1 Ramsey Road, Shirley, NY 11967, USA

KLRPPPARTPCQQELDQVLERISTMRLPDERGPLEHLYSLHIPNCDKHGLYNLKQCK  
 MSLN  
 GQRGECWCVNPNTGKLIQGAPTIRGDPECHLFYNEQQEARGVHTQRMQTRTRPLE  
 QKLISEEDLAANDILDYKDDDDKV

<b>Purity</b>	> 80% as determined by SDS-PAGE and Coomassie blue staining.
<b>Stability</b>	Stable for 12 months from the date of receipt of the product under proper storage and handling conditions. Avoid repeated freeze-thaw cycles.
<b>Storage</b>	Store at -80 centigrade.
<b>Concentration</b>	>50 ug/mL as determined by microplate BCA method.
<b>Preparation</b>	Recombinant protein was captured through anti-DDK affinity column followed by conventional chromatography steps.
<b>Protein Pathways</b>	Adult stem cells, Druggable Genome, Embryonic stem cells, ES Cell Differentiation/IPS, Secreted Protein
<b>Full Length</b>	Full L.

## GENE INFORMATION

<b>Gene Name</b>	IGFBP2 insulin like growth factor binding protein 2 [ Homo sapiens (human) ]
<b>Official Symbol</b>	IGFBP2
<b>Synonyms</b>	IBP2; IGF-BP53
<b>Gene ID</b>	3485

 Tel: 1-631-559-9269 1-516-512-3133

 Email: [info@creative-biomart.com](mailto:info@creative-biomart.com)  Fax: 1-631-938-8127

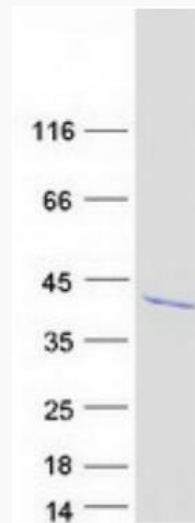
 45-1 Ramsey Road, Shirley, NY 11967, USA

mRNA Refseq [NM\\_000597.3](#)

Protein Refseq [NP\\_000588.3](#)

MIM [146731](#)

UniProt ID [P18065](#)



Coomassie blue staining of purified IGFBP2 protein.

 Tel: 1-631-559-9269 1-516-512-3133

 Email: [info@creative-biomart.com](mailto:info@creative-biomart.com)  Fax: 1-631-938-8127

 45-1 Ramsey Road, Shirley, NY 11967, USA