

# Recombinant Bovine Insulin-Like Growth Factor Binding Protein 2, 36kDa

**Cat. No.** IGFBP2-1414B    **Lot. No.** (See product label)

## SPECIFICATION

<b>Product Overview</b>	Recombinant bovine IGFBP-2 produced in <i>CHO cells</i> is a 284 amino acid protein. MW = 30.776 kDa.
<b>Species</b>	Bovine
<b>Source</b>	CHO
<b>Description</b>	Bovine Insulin-like Growth Factor Binding Protein-2 (bIGFBP-2) is one of the six “classical” IGF binding proteins that play an important role in stabilizing and regulating the activity of IGFs in vivo. bIGFBP-2 binds both human and bovine IGF-I and IGF-II and modifies their biological activity and bioavailability. The Animal/Media Grade product contains mature bovine IGFBP-2 of correct Molecular Weight as the major species. As a result of alternative processing by the CHO cells used for the bIGFBP-2 production, three other minor bIGFBP-2 isoforms are also present: 1) One with a three amino acid C-terminal deletion, denoted Des(1-3) bIGFBP-2. 2) One with a single amino acid N-terminal extension, denoted A-bIGFBP-2. 3) One with a four amino acid N-terminal extension, denoted GARA-bIGFBP-2.
<b>Purity</b>	>95% by HPLC and Mass Spectrometry.
<b>Biological Activity</b>	IGF-I Binding Assay : ED50 < 10 nM.
<b>State And Appearance</b>	Lyophilized white powder dried from 0.1% TFA / 30% acetonitrile and stored under dry nitrogen at a slight vacuum (-25 kPa).

 Tel: 1-631-559-9269    1-516-512-3133

 Email: [info@creative-biomart.com](mailto:info@creative-biomart.com)     Fax: 1-631-938-8127

 45-1 Ramsey Road, Shirley, NY 11967, USA

**Storage/Stability** At least 2 years at 2 - 4°C (lyophilized).

## GENE INFORMATION

**Gene Name** IGFBP2 insulin-like growth factor binding protein 2, 36kDa [ Bos taurus ]

**Synonyms** insulin-like growth factor binding protein 2, 36kDa; IGFBP2

**Gene ID** 282260

**mRNA Refseq** NM\_174555

**Protein Refseq** NP\_776980

**UniProt ID** P13384

**Chromosome  
Location** 2

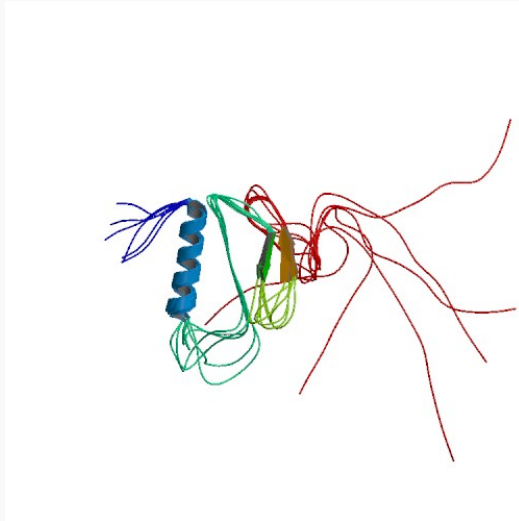
**Function** insulin-like growth factor I binding; insulin-like growth factor II binding

 Tel: 1-631-559-9269 1-516-512-3133

 Email: [info@creative-biomart.com](mailto:info@creative-biomart.com)  Fax: 1-631-938-8127

 45-1 Ramsey Road, Shirley, NY 11967, USA

PDB rendering based  
on 2h7t.



 Tel: 1-631-559-9269 1-516-512-3133

 Email: [info@creative-biomart.com](mailto:info@creative-biomart.com)  Fax: 1-631-938-8127

 45-1 Ramsey Road, Shirley, NY 11967, USA