

Recombinant Human IGFBP2 Protein, His-tagged

Cat. No. IGFBP2-32H Lot. No. (See product label)

SPECIFICATION

Product Overview	Recombinant Human IGFBP2 Protein(NP_001300919)(Asp148~Gln325), fused to His tag, was expressed in E. coli.
Species	Human
Source	E.coli
ProteinLength	Asp148~Gln325
Form	100mMNaHCO ₃ , 500mMNaCl, pH8.3, containing 1mM EDTA, 1mM DTT, 0.01% SKL, 5% Trehalose and Proclin300.
Molecular Mass	24kDa
Endotoxin	<1.0EU per 1g (determined by the LAL method)
Purity	> 90%
Applications	Positive Control; Immunogen; SDS-PAGE; WB.
Storage	Avoid repeated freeze/thaw cycles. Store at 2-8°C for one month. Aliquot and store at -80°C for 12 months.
Concentration	200g/mL

 Tel: 1-631-559-9269 1-516-512-3133

 Email: info@creative-biomart.com  Fax: 1-631-938-8127

 45-1 Ramsey Road, Shirley, NY 11967, USA

Reconstitution Reconstitute in 100mM NaHCO₃, 500mM NaCl (pH8.3) to a concentration of 0.1-1.0 mg/mL. Do not vortex.

GENE INFORMATION

Gene Name IGFBP2 insulin like growth factor binding protein 2 [Homo sapiens (human)]

Official Symbol IGFBP2

Synonyms IGFBP2; insulin like growth factor binding protein 2; IBP2; IGF-BP53; insulin-like growth factor-binding protein 2; IGF-binding protein 2;

Gene ID 3485

mRNA Refseq NM_001313990

Protein Refseq NP_001300919

MIM 146731

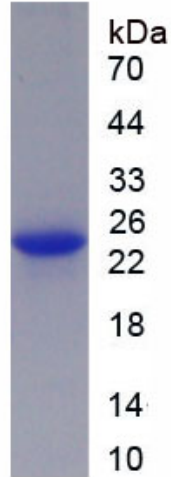
UniProt ID P18065

 Tel: 1-631-559-9269 1-516-512-3133

 Email: info@creative-biomart.com  Fax: 1-631-938-8127

 45-1 Ramsey Road, Shirley, NY 11967, USA

SDS-PAGE



 Tel: 1-631-559-9269 1-516-512-3133

 Email: info@creative-biomart.com  Fax: 1-631-938-8127

 45-1 Ramsey Road, Shirley, NY 11967, USA