

Recombinant Human IGFBP2 Protein, Myc/DDK-tagged, C13 and N15-labeled

Cat. No. IGFBP2-5679H **Lot. No.** (See product label)

SPECIFICATION

Product Overview	IGFBP2 MS Standard C13 and N15-labeled recombinant protein (NP_000588) with a C-terminal MYC/DDK tag, was expressed in HEK293 cells.
Species	Human
Source	HEK293
Description	The protein encoded by this gene is one of six similar proteins that bind insulin-like growth factors I and II (IGF-I and IGF-II). The encoded protein can be secreted into the bloodstream, where it binds IGF-I and IGF-II with high affinity, or it can remain intracellular, interacting with many different ligands. High expression levels of this protein promote the growth of several types of tumors and may be predictive of the chances of recovery of the patient. Several transcript variants, one encoding a secreted isoform and the others encoding nonsecreted isoforms, have been found for this gene.
Molecular Mass	35 kDa
AA Sequence	MLPRVGC PALPLPPP LLLPL LLLLLL GASGGGG GARAEV LFRCP PCTPER LAACG PPPVAPPA AAVA AVAGGAR MPCAE LVREPG CGCCSVC ARLEGEACGVYTPRCGQG LRCYPHPGSELPLQALVMGEGTCEKRRDAEY GASPEQVADNGDDHSEGGLVENHV DSTMNMLGGGGSAGRKPLKSGMKELAVFREKVTEQHRQMKGKGGKHHLGLLEPKK LRPPPARTPCQQELDQVLERISTMRLPDERGPLEHLYSLHIPNCDKHGLYNLKQCKM

 Tel: 1-631-559-9269 1-516-512-3133

 Email: info@creative-biomart.com  Fax: 1-631-938-8127

 45-1 Ramsey Road, Shirley, NY 11967, USA

SLNGQRGECWCVPNTGKLIQGAPTIRGDPECHLFYNEQQEARGVHTQRMQTRTR
PLEQKLISEEDLAANDILDYKDDDDKV

Purity > 80% as determined by SDS-PAGE and Coomassie blue staining

Stability Stable for 3 months from receipt of products under proper storage and handling conditions.

Storage Store at -80 centigrade. Avoid repeated freeze-thaw cycles.

Concentration 50 µg/mL as determined by BCA

Storage Buffer 100 mM glycine, 25 mM Tris-HCl, pH 7.3.

GENE INFORMATION

Gene Name IGFBP2 insulin like growth factor binding protein 2 [Homo sapiens (human)]

Official Symbol IGFBP2

Synonyms IGFBP2; insulin-like growth factor binding protein 2, 36kDa; IBP2, insulin like growth factor binding protein 2 (36kD); insulin-like growth factor-binding protein 2; IBP-2; IGFBP-2; IGF-binding protein 2; IBP2; IGF-BP53;

Gene ID 3485

mRNA Refseq NM_000597

Protein Refseq NP_000588

MIM 146731

 Tel: 1-631-559-9269 1-516-512-3133

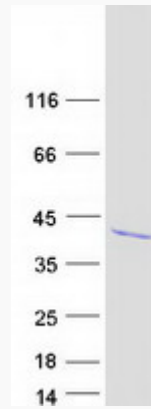
 Email: info@creative-biomart.com  Fax: 1-631-938-8127

 45-1 Ramsey Road, Shirley, NY 11967, USA

UniProt ID

P18065

SDS-PAGE



 Tel: 1-631-559-9269 1-516-512-3133

 Email: info@creative-biomart.com  Fax: 1-631-938-8127

 45-1 Ramsey Road, Shirley, NY 11967, USA