

## Recombinant Human IGFBP2 protein, His & T7-tagged

Cat. No. IGFBP2-824H Lot. No. (See product label)

### SPECIFICATION

<b>Product Overview</b>	Recombinant Human IGFBP2 aa. (Asp148~Gln325) fused with N-terminal His & T7 tag was produced in E. coli cells.
<b>Species</b>	Human
<b>Source</b>	E.coli
<b>ProteinLength</b>	Asp148~Gln325
<b>Description</b>	The protein encoded by this gene is one of six similar proteins that bind insulin-like growth factors I and II (IGF-I and IGF-II). The encoded protein can be secreted into the bloodstream, where it binds IGF-I and IGF-II with high affinity, or it can remain intracellular, interacting with many different ligands. High expression levels of this protein promote the growth of several types of tumors and may be predictive of the chances of recovery of the patient. Several transcript variants, one encoding a secreted isoform and the others encoding nonsecreted isoforms, have been found for this gene.
<b>Form</b>	Freeze-dried powder
<b>Molecular Mass</b>	Predicted Molecular Mass: 23.7kDa
<b>Endotoxin</b>	<1.0EU per 1g (determined by the LAL method)
<b>Purity</b>	> 95%

 Tel: 1-631-559-9269 1-516-512-3133

 Email: [info@creative-biomart.com](mailto:info@creative-biomart.com)  Fax: 1-631-938-8127

 45-1 Ramsey Road, Shirley, NY 11967, USA

<b>Characteristic</b>	The isoelectric point is 7.8.
<b>Applications</b>	SDS-PAGE; WB; ELISA; IP
<b>Stability</b>	The thermal stability is described by the loss rate. The loss rate was determined by accelerated thermal degradation test, that is, incubate the protein at 37°C for 48h, and no obvious degradation and precipitation were observed. The loss rate is less than 5% within the expiration date under appropriate storage condition.
<b>Storage</b>	Avoid repeated freeze/thaw cycles. Store at 2-8°C for one month. Aliquot and store at -80°C for 12 months.
<b>Storage buffer</b>	Supplied as lyophilized form in PBS, pH7.4, containing 5% trehalose, 0.01% sarcosyl
<b>Reconstitution</b>	Reconstitute in sterile PBS, pH7.2-pH7.4

## GENE INFORMATION

<b>Gene Name</b>	IGFBP2 insulin like growth factor binding protein 2 [ Homo sapiens (human) ]
<b>Official Symbol</b>	IGFBP2
<b>Synonyms</b>	IGFBP2; insulin like growth factor binding protein 2; IBP2; IGF-BP53; insulin-like growth factor-binding protein 2; IGF-binding protein 2; insulin-like growth factor binding protein 2, 36kDa
<b>Gene ID</b>	3485
<b>mRNA Refseq</b>	NM_000597.2
<b>Protein Refseq</b>	NP_000588.2

 Tel: 1-631-559-9269 1-516-512-3133

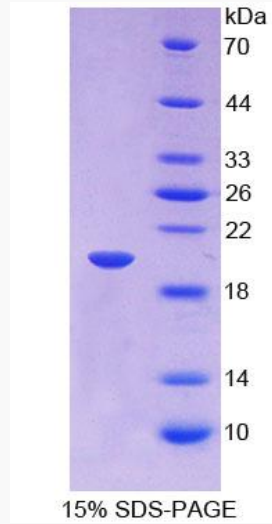
 Email: [info@creative-biomart.com](mailto:info@creative-biomart.com)  Fax: 1-631-938-8127

 45-1 Ramsey Road, Shirley, NY 11967, USA

UniProt ID

P18065

SDS-PAGE



 Tel: 1-631-559-9269 1-516-512-3133

 Email: [info@creative-biomart.com](mailto:info@creative-biomart.com)  Fax: 1-631-938-8127

 45-1 Ramsey Road, Shirley, NY 11967, USA