

## Recombinant Human IGFBP3 protein, His-tagged

**Cat. No.** IGFBP3-1410H    **Lot. No.** (See product label)

### SPECIFICATION

<b>Product Overview</b>	Recombinant Human IGFBP3 protein(113-210 aa), fused with N-terminal His tag, was expressed in E. coli.
<b>Species</b>	Human
<b>Source</b>	E.coli
<b>ProteinLength</b>	113-210 aa
<b>Tag</b>	N-His
<b>Form</b>	The purified protein was Lyophilized from sterile PBS (58mM Na <sub>2</sub> HPO <sub>4</sub> , 17mM NaH <sub>2</sub> PO <sub>4</sub> , 68mM NaCl, pH7.4). 5 % trehalose and 5 % mannitol are added as protectant before lyophilization.
<b>Purity</b>	85%, by SDS-PAGE with Coomassie Brilliant Blue staining.
<b>Storage</b>	Short-term storage: Store at 2-8°C for (1-2 weeks). Long-term storage: Aliquot and store at -20°C to -80°C for up to 3 months, reconstitution with sterile water and addition of an equal volume of glycerol. Avoid repeat freeze-thaw cycles.
<b>Reconstitution</b>	Reconstitute at 0.25 µg/µl in 200 µl sterile water for short-term storage. After reconstitution with sterile water, if glycerol has no effect on subsequent experiments, it is recommended to add an equal volume of glycerol for long-term storage.

 Tel: 1-631-559-9269    1-516-512-3133

 Email: [info@creative-biomart.com](mailto:info@creative-biomart.com)     Fax: 1-631-938-8127

 45-1 Ramsey Road, Shirley, NY 11967, USA

**AA Sequence** LCVNASAVSRLRAYLLPAPPAPGNASESEEDRSAGSVESPSVSSTHRVSDPKFHPL  
HSKIIIIKKGHAKDSQRYKVDYESQSTDTQNFSSSESKRETEY

## GENE INFORMATION

**Gene Name** [IGFBP3 insulin-like growth factor binding protein 3 \[ Homo sapiens \]](#)

**Official Symbol** [IGFBP3](#)

**Synonyms**

IGFBP3; insulin-like growth factor binding protein 3; insulin-like growth factor-binding protein 3; acid stable subunit of the 140 K IGF complex; binding protein 29; binding protein 53; BP 53; growth hormone dependent binding protein; IBP3; IGF binding protein 3; IBP-3; IGFBP-3; IGF-binding protein 3; growth hormone-dependent binding protein; BP-53;

**Gene ID** [3486](#)

**mRNA Refseq** [NM\\_000598](#)

**Protein Refseq** [NP\\_000589](#)

**MIM** [146732](#)

**UniProt ID** [P17936](#)

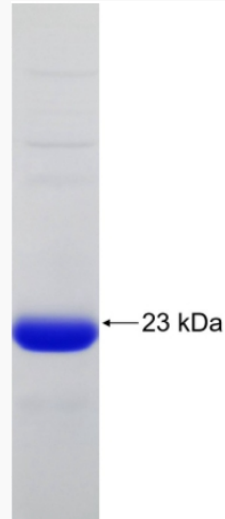
 Tel: 1-631-559-9269 1-516-512-3133

 Email: [info@creative-biomart.com](mailto:info@creative-biomart.com)  Fax: 1-631-938-8127

 45-1 Ramsey Road, Shirley, NY 11967, USA



SDS-PAGE



Tel: 1-631-559-9269 1-516-512-3133

Email: [info@creative-biomart.com](mailto:info@creative-biomart.com) Fax: 1-631-938-8127

45-1 Ramsey Road, Shirley, NY 11967, USA