

Recombinant Human IGFBP3 protein, His-tagged

Cat. No. IGFBP3-2716H Lot. No. (See product label)

SPECIFICATION

Product Overview	Recombinant Human IGFBP3 protein(AAH18962)(Gly28-Lys291), fused with C-terminal His tag, was expressed in HEK293.
Species	Human
Source	HEK293
ProteinLength	Gly28-Lys291
Tag	C-His
Form	Lyophilized from 0.22µm filtered solution in PBS (pH 7.4). Normally 8% trehalose is added as protectant before lyophilization.
Bio-activity	Immobilized Human IGFBP-3, His Tag at 2ug/ml (100ul/well) on the plate. Dose response curve for Human IGF-II, hFc Tag with the EC50 of 0.19ug/ml determined by ELISA (QC Test).
Molecular Mass	The protein has a predicted MW of 29.8 kDa. Due to glycosylation, the protein migrates to 45-60 kDa based on Tris-Bis PAGE result.
Endotoxin	Less than 1EU per µg by the LAL method.
Purity	> 95% as determined by Tris-Bis PAGE

 Tel: 1-631-559-9269 1-516-512-3133

 Email: info@creative-biomart.com  Fax: 1-631-938-8127

 45-1 Ramsey Road, Shirley, NY 11967, USA

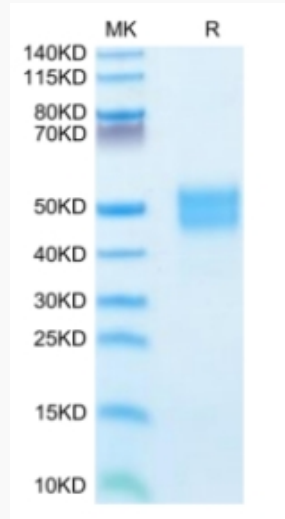
Storage	Reconstituted protein stable at -80°C for 12 months, 4°C for 1 week. Use a manual defrost freezer and avoid repeated freeze-thaw cycles.
Reconstitution	Centrifuge tubes before opening. Reconstituting to a concentration more than 100 µg/ml is recommended. Dissolve the lyophilized protein in distilled water.
GENE INFORMATION	
Gene Name	IGFBP3 insulin-like growth factor binding protein 3 [Homo sapiens]
Official Symbol	IGFBP3
Synonyms	IGFBP3; insulin-like growth factor binding protein 3; insulin-like growth factor-binding protein 3; acid stable subunit of the 140 K IGF complex; binding protein 29; binding protein 53; BP 53; growth hormone dependent binding protein; IBP3; IGF binding protein 3; IBP-3; IGFBP-3; IGF-binding protein 3; growth hormone-dependent binding protein; BP-53;
Gene ID	3486
mRNA Refseq	NM_000598
Protein Refseq	NP_000589
MIM	146732
UniProt ID	P17936

 Tel: 1-631-559-9269 1-516-512-3133

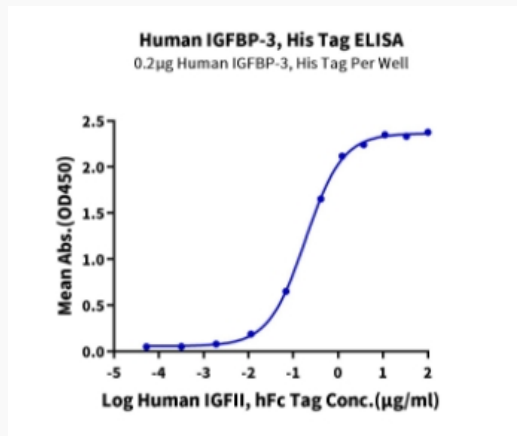
 Email: info@creative-biomart.com  Fax: 1-631-938-8127

 45-1 Ramsey Road, Shirley, NY 11967, USA

Tris-Bis PAGE



ELISA Data



 Tel: 1-631-559-9269 1-516-512-3133

 Email: info@creative-biomart.com  Fax: 1-631-938-8127

 45-1 Ramsey Road, Shirley, NY 11967, USA