

Recombinant Human IGFBP4 Protein, Myc/DDK-tagged, C13 and N15-labeled

Cat. No. IGFBP4-1734H **Lot. No.** (See product label)

SPECIFICATION

Product Overview	IGFBP4 MS Standard C13 and N15-labeled recombinant protein (NP_001543) with a C-terminal MYC/DDK tag, was expressed in HEK293 cells.
Species	Human
Source	HEK293
Description	This gene is a member of the insulin-like growth factor binding protein (IGFBP) family and encodes a protein with an IGFBP domain and a thyroglobulin type-I domain. The protein binds both insulin-like growth factors (IGFs) I and II and circulates in the plasma in both glycosylated and non-glycosylated forms. Binding of this protein prolongs the half-life of the IGFs and alters their interaction with cell surface receptors.
Molecular Mass	27.9 kDa
AA Sequence	MLPLCLVAALLLAAGPGPSLGDEAIHCPPCSEEKLARCRPPVGCEELVREPGCGCC ATCALGLGMPCGVYTPRCGSLRCYPPRGVEKPLHTLMHGQGVCMELAEIEAIQES LQPSDKDEGDHPNNSFSPCSAHDRRCLQKHFAKIRDRSTSGGKMKVNGAPREDAR PVPQGSCQSELHRALERLAASQSRTHEDLYIIPNCDRNGNFHPKQCHPALDGQR GKCWCVDRKTGVKLPGGLEPKGELDCHQLADSFRETRTRPLEQKLISEEDLAANDIL DYKDDDDKV
Purity	> 80% as determined by SDS-PAGE and Coomassie blue staining

 Tel: 1-631-559-9269 1-516-512-3133

 Email: info@creative-biomart.com  Fax: 1-631-938-8127

 45-1 Ramsey Road, Shirley, NY 11967, USA

Stability	Stable for 3 months from receipt of products under proper storage and handling conditions.
Storage	Store at -80 centigrade. Avoid repeated freeze-thaw cycles.
Concentration	50 µg/mL as determined by BCA
Storage Buffer	100 mM glycine, 25 mM Tris-HCl, pH 7.3.

GENE INFORMATION

Gene Name	IGFBP4 insulin-like growth factor binding protein 4 [Homo sapiens (human)]
Official Symbol	IGFBP4
Synonyms	IGFBP4; insulin-like growth factor binding protein 4; insulin like growth factor binding protein 4; insulin-like growth factor-binding protein 4; BP 4; HT29 IGFBP; IBP4; IGF binding protein 4; IGFBP 4; IBP-4; IGF-binding protein 4; BP-4; IGFBP-4; HT29-IGFBP;
Gene ID	3487
mRNA Refseq	NM_001552
Protein Refseq	NP_001543
MIM	146733
UniProt ID	P22692

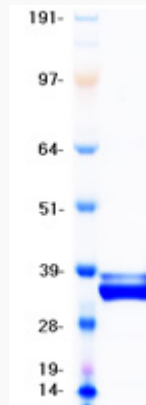
 Tel: 1-631-559-9269 1-516-512-3133

 Email: info@creative-biomart.com  Fax: 1-631-938-8127

 45-1 Ramsey Road, Shirley, NY 11967, USA



SDS-PAGE



Tel: 1-631-559-9269 1-516-512-3133

Email: info@creative-biomart.com Fax: 1-631-938-8127

45-1 Ramsey Road, Shirley, NY 11967, USA