

Recombinant Human IGFBP6 Protein, Myc/DDK-tagged, C13 and N15-labeled

Cat. No. IGFBP6-5340H **Lot. No.** (See product label)

SPECIFICATION

Product Overview	IGFBP6 MS Standard C13 and N15-labeled recombinant protein (NP_002169) with a C-terminal MYC/DDK tag, was expressed in HEK293 cells.
Species	Human
Source	HEK293
Description	IGF-binding proteins prolong the half-life of the IGFs and have been shown to either inhibit or stimulate the growth promoting effects of the IGFs on cell culture. They alter the interaction of IGFs with their cell surface receptors.
Molecular Mass	25.3 kDa
AA Sequence	MTPHRLLPPLLLLLALLLAASPGGALARCPGCGQGVQAGCPGGCVEEEDGGSPAE GCAEAEGCLRREGQECGVYTPNCAPGLQCHPPKDDEAPLRALLLGRGRCLPARAP AVAEENPKESKPQAGTARPQDVNRRDQQRNPGTSTTPSQPNSAGVQDTEMGPCR RHLDVSLQQLQTEVYRGAQTLYVPNCDHRGFYRKRQCRSSQGQRRGPCWCVDR MGKSLPGSPDGNSSSCTGSSGTRTRPLEQKLISEEDLAANDILDYKDDDDKV
Purity	> 80% as determined by SDS-PAGE and Coomassie blue staining
Stability	Stable for 3 months from receipt of products under proper storage and handling conditions.

 Tel: 1-631-559-9269 1-516-512-3133

 Email: info@creative-biomart.com  Fax: 1-631-938-8127

 45-1 Ramsey Road, Shirley, NY 11967, USA

Storage	Store at -80 centigrade. Avoid repeated freeze-thaw cycles.
Concentration	50 µg/mL as determined by BCA
Storage Buffer	100 mM glycine, 25 mM Tris-HCl, pH 7.3.

GENE INFORMATION

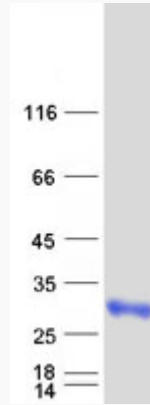
Gene Name	IGFBP6 insulin-like growth factor binding protein 6 [Homo sapiens (human)]
Official Symbol	IGFBP6
Synonyms	IGFBP6; insulin-like growth factor binding protein 6; insulin-like growth factor-binding protein 6; IBP-6; IGFBP-6; IGF binding protein 6; IGF-binding protein 6; IBP6;
Gene ID	3489
mRNA Refseq	NM_002178
Protein Refseq	NP_002169
MIM	146735
UniProt ID	P24592

 Tel: 1-631-559-9269 1-516-512-3133

 Email: info@creative-biomart.com  Fax: 1-631-938-8127

 45-1 Ramsey Road, Shirley, NY 11967, USA

SDS-PAGE



 Tel: 1-631-559-9269 1-516-512-3133

 Email: info@creative-biomart.com  Fax: 1-631-938-8127

 45-1 Ramsey Road, Shirley, NY 11967, USA