

Recombinant Human IGFBP7 Protein, His-tagged

Cat. No. IGFBP7-2280H **Lot. No.** (See product label)

SPECIFICATION

Product Overview	Recombinant Human IGFBP7 Protein (Ser24-Leu50+Gly130-Leu282) with a N-His tag was expressed in E. coli.
Species	Human
Source	E.coli
ProteinLength	Ser24-Leu50+Gly130-Leu282
Description	This gene encodes a member of the insulin-like growth factor (IGF)-binding protein (IGFBP) family. IGFBPs bind IGFs with high affinity, and regulate IGF availability in body fluids and tissues and modulate IGF binding to its receptors. This protein binds IGF-I and IGF-II with relatively low affinity, and belongs to a subfamily of low-affinity IGFBPs. It also stimulates prostacyclin production and cell adhesion. Alternatively spliced transcript variants encoding different isoforms have been described for this gene, and one variant has been associated with retinal arterial macroaneurysm.
Form	Freeze-dried powder
Molecular Mass	Predicted Molecular Mass: 22.7 kDa Accurate Molecular Mass: 25 kDa
Endotoxin	<1.0 EU per 1g (determined by the LAL method).
Purity	> 90%

 Tel: 1-631-559-9269 1-516-512-3133

 Email: info@creative-biomart.com  Fax: 1-631-938-8127

 45-1 Ramsey Road, Shirley, NY 11967, USA

Applications	Positive Control; Immunogen; SDS-PAGE; WB.
Stability	The thermal stability is described by the loss rate. The loss rate was determined by accelerated thermal degradation test, that is, incubate the protein at 37 centigrade for 48h, and no obvious degradation and precipitation were observed. The loss rate is less than 5% within the expiration date under appropriate storage condition.
Storage	Avoid repeated freeze/thaw cycles. Store at 2-8 centigrade for one month. Aliquot and store at -80 centigrade for 12 months.
Storage Buffer	20mM Tris, 150mM NaCl, pH8.0, containing 1mM EDTA, 1mM DTT, 0.01% SKL, 5% Trehalose and Proclin300.
Reconstitution	Reconstitute in 20mM Tris, 150mM NaCl (pH8.0) to a concentration of 0.1-1.0 mg/mL. Do not vortex.

GENE INFORMATION

Gene Name	IGFBP7 insulin-like growth factor binding protein 7 [Homo sapiens (human)]
Official Symbol	IGFBP7
Synonyms	IGFBP7; insulin-like growth factor binding protein 7; insulin-like growth factor-binding protein 7; FSTL2; IGFBP 7; MAC25; PSF; IGFBP-rP1; angiomodulin; IGF-binding protein 7; PGI2-stimulating factor; tumor-derived adhesion factor; prostacyclin-stimulating factor; AGM; TAF; IBP-7; IGFBP-7; RAMSVPS; IGFBP-7v; IGFBPRP1;
Gene ID	3490
mRNA Refseq	NM_001253835

 Tel: 1-631-559-9269 1-516-512-3133

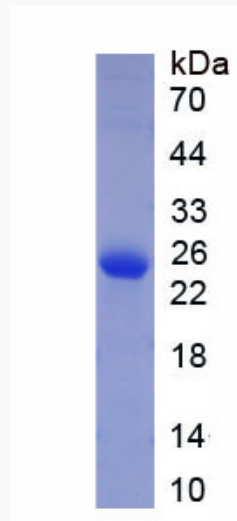
 Email: info@creative-biomart.com  Fax: 1-631-938-8127

 45-1 Ramsey Road, Shirley, NY 11967, USA

Protein Refseq NP_001240764

MIM 602867

UniProt ID Q16270



 Tel: 1-631-559-9269 1-516-512-3133

 Email: info@creative-biomart.com  Fax: 1-631-938-8127

 45-1 Ramsey Road, Shirley, NY 11967, USA