

Recombinant Human IGFBP7 protein, His-tagged

Cat. No. IGFBP7-2281H Lot. No. (See product label)

SPECIFICATION

Product Overview	Recombinant Human IGFBP7 protein(Q16270)(Ser27-Leu282), fused with N-terminal His tag, was expressed in HEK293.
Species	Human
Source	HEK293
ProteinLength	Ser27-Leu282
Tag	N-His
Form	Lyophilized from 0.22µm filtered solution in PBS (pH 7.4). Normally 5% trehalose is added as protectant before lyophilization.
Bio-activity	Immobilized Human CD93, His Tag at 5ug/ml (100ul/well) on the plate. Dose response curve for Human IGFBP-7, hFc Tag with the EC50 of 0.69ug/ml determined by ELISA.
Molecular Mass	The protein has a predicted MW of 27.5 kDa. Due to glycosylation, the protein migrates to 35-40 kDa based on Tris-Bis PAGE result.
Endotoxin	Less than 1EU per µg by the LAL method.
Purity	> 95% as determined by Tris-Bis PAGE;> 95% as determined by HPLC

 Tel: 1-631-559-9269 1-516-512-3133

 Email: info@creative-biomart.com  Fax: 1-631-938-8127

 45-1 Ramsey Road, Shirley, NY 11967, USA

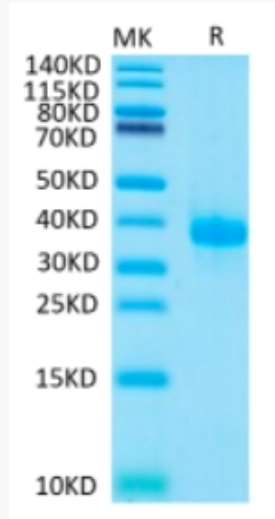
Storage	Reconstituted protein stable at -80°C for 12 months, 4°C for 1 week. Use a manual defrost freezer and avoid repeated freeze-thaw cycles.
Reconstitution	Centrifuge tubes before opening. Reconstituting to a concentration more than 100 µg/ml is recommended. Dissolve the lyophilized protein in distilled water.
GENE INFORMATION	
Gene Name	IGFBP7 insulin-like growth factor binding protein 7 [Homo sapiens]
Official Symbol	IGFBP7
Synonyms	IGFBP7; insulin-like growth factor binding protein 7; insulin-like growth factor-binding protein 7; FSTL2; IGFBP 7; MAC25; PSF; IGFBP-rP1; angiomodulin; IGF-binding protein 7; PGI2-stimulating factor; tumor-derived adhesion factor; prostacyclin-stimulating factor; AGM; TAF; IBP-7; IGFBP-7; RAMSVPS; IGFBP-7v; IGFBPRP1;
Gene ID	3490
mRNA Refseq	NM_001253835
Protein Refseq	NP_001240764
MIM	602867
UniProt ID	Q16270

 Tel: 1-631-559-9269 1-516-512-3133

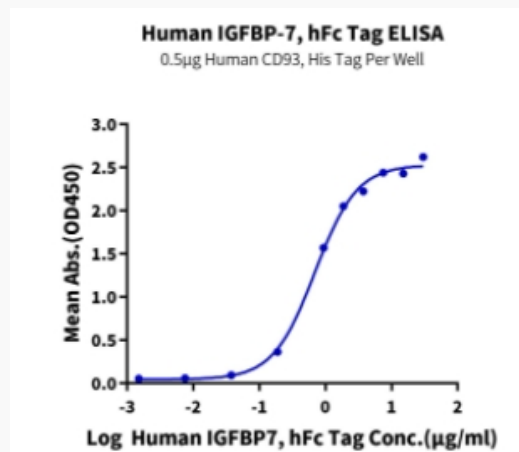
 Email: info@creative-biomart.com  Fax: 1-631-938-8127

 45-1 Ramsey Road, Shirley, NY 11967, USA

Tris-Bis PAGE



ELISA Data



 Tel: 1-631-559-9269 1-516-512-3133

 Email: info@creative-biomart.com  Fax: 1-631-938-8127

 45-1 Ramsey Road, Shirley, NY 11967, USA