

Recombinant Human IGFBP7 protein, hFc-tagged

Cat. No. IGFBP7-5165H Lot. No. (See product label)

SPECIFICATION

Product Overview	Recombinant Human IGFBP7 protein(Q16270)(Ser27-Leu282) is expressed from HEK293 with hFc tag at the C-Terminus.
Species	Human
Source	HEK293
ProteinLength	Ser27-Leu282
Form	Lyophilized from 0.22µm filtered solution in PBS (pH 7.4). Normally 8% trehalose is added as protectant before lyophilization.
Bio-activity	Immobilized Human CD93, His Tag at 2µg/ml (100µl/well) on the plate. Dose response curve for Human IGFBP-7, hFc Tag with the EC50 of 0.80µg/ml determined by ELISA.
Molecular Mass	The protein has a predicted MW of 53.20 kDa. Due to glycosylation, the protein migrates to 60-70 kDa based on Tris-Bis PAGE result.
Endotoxin	Less than 1EU per µg by the LAL method.
Purity	> 95% as determined by Tris-Bis PAGE > 95% as determined by HPLC
Storage	-20 to -80°C for 12 months as supplied from date of receipt.

 Tel: 1-631-559-9269 1-516-512-3133

 Email: info@creative-biomart.com  Fax: 1-631-938-8127

 45-1 Ramsey Road, Shirley, NY 11967, USA

-80°C for 3-6 months after reconstitution.
 2-8°C for 2-7 days after reconstitution.
 Recommend to aliquot the protein into smaller quantities for optimal storage. Please minimize freeze-thaw cycles.

Reconstitution Centrifuge the tube before opening. Reconstituting to a concentration more than 100 µg/ml is recommended. Dissolve the lyophilized protein in distilled water.

GENE INFORMATION

Gene Name [IGFBP7 insulin-like growth factor binding protein 7 \[Homo sapiens \]](#)

Official Symbol [IGFBP7](#)

Synonyms IGFBP7; insulin-like growth factor binding protein 7; insulin-like growth factor-binding protein 7; FSTL2; IGFBP 7; MAC25; PSF; IGFBP-rP1; angiomodulin; IGF-binding protein 7; PGI2-stimulating factor; tumor-derived adhesion factor; prostacyclin-stimulating factor; AGM; TAF; IBP-7; IGFBP-7; RAMSVPS; IGFBP-7v; IGFBPRP1;

Gene ID [3490](#)

mRNA Refseq [NM_001253835](#)

Protein Refseq [NP_001240764](#)

MIM [602867](#)

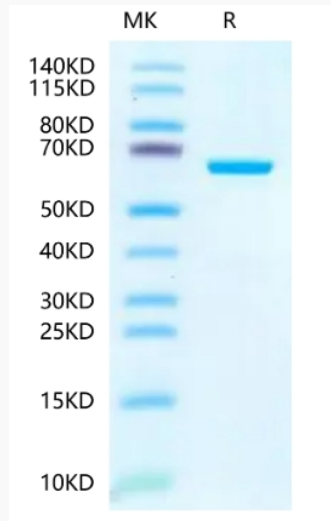
UniProt ID [Q16270](#)

 Tel: 1-631-559-9269 1-516-512-3133

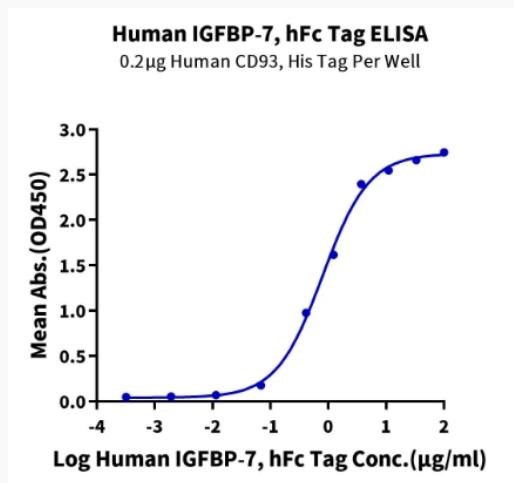
 Email: info@creative-biomart.com  Fax: 1-631-938-8127

 45-1 Ramsey Road, Shirley, NY 11967, USA

SDS-PAGE



ELISA Data



 Tel: 1-631-559-9269 1-516-512-3133

 Email: info@creative-biomart.com  Fax: 1-631-938-8127

 45-1 Ramsey Road, Shirley, NY 11967, USA