

Recombinant Human IGFBP7 protein, His-tagged

Cat. No. IGFBP7-533H Lot. No. (See product label)

SPECIFICATION

Product Overview	Recombinant Human IGFBP7 protein(Q16270)(27-282aa), fused with C-terminal His tag, was expressed in E.coli.
Species	Human
Source	E.coli
ProteinLength	27-282a.a.
Tag	His
Form	If the delivery form is liquid, the default storage buffer is Tris/PBS-based buffer, 5%-50% glycerol. If the delivery form is lyophilized powder, the buffer before lyophilization is Tris/PBS-based buffer, 6% Trehalose, pH 8.0.
Molecular Mass	33.3 kDa
Purity	Greater than 85% as determined by SDS-PAGE.
Storage	Store at -20°C/-80°C upon receipt, aliquoting is necessary for mutiple use. Avoid repeated freeze-thaw cycles.
Reconstitution	We recommend that this vial be briefly centrifuged prior to opening to bring the contents to the bottom. Please reconstitute protein in deionized sterile water to a concentration of 0.1-1.0 mg/mL. We recommend to add 5-50% of glycerol (final

 Tel: 1-631-559-9269 1-516-512-3133

 Email: info@creative-biomart.com  Fax: 1-631-938-8127

 45-1 Ramsey Road, Shirley, NY 11967, USA

concentration) and aliquot for long-term storage at -20°C/-80°C.

AA Sequence

SSSDTCGPCEPASCPPLPPLGCLLGETRDACGCCPMCARGEGEPCGGGGAGRGY
 CAPGMECVKSRKRRKKGKAGAAAGGPGVSGVCVCKSRYPVCGSDGTTYPGSGCLR
 AASQRAESRGEKAITQVSKGTCEQGSPSIVTPPKDIWNVTGAQVYLSCEVIGIPTVLI
 WNKVKRGHYGVQRTELLPGDRDNLAIQTRGGPEKHEVTGWVLVSPLSKEDAGEYE
 CHASNSQGGASASAKITVVDALHEIPVKKGEGEAL

GENE INFORMATION

Gene Name

IGFBP7 insulin-like growth factor binding protein 7 [Homo sapiens]

Official Symbol

IGFBP7

Synonyms

IGFBP7; insulin-like growth factor binding protein 7; insulin-like growth factor-binding protein 7; FSTL2; IGFBP 7; MAC25; PSF; IGFBP-rP1; angiomodulin; IGF-binding protein 7; PGI2-stimulating factor; tumor-derived adhesion factor; prostacyclin-stimulating factor; AGM; TAF; IBP-7; IGFBP-7; RAMSVPS; IGFBP-7v; IGFBPRP1;

Gene ID

3490

mRNA Refseq

NM_001253835

Protein Refseq

NP_001240764

MIM

602867

UniProt ID

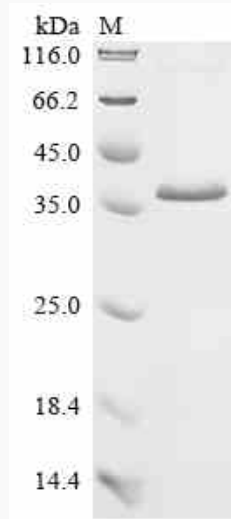
Q16270

 Tel: 1-631-559-9269 1-516-512-3133

 Email: info@creative-biomart.com  Fax: 1-631-938-8127

 45-1 Ramsey Road, Shirley, NY 11967, USA

SDS-PAGE



 Tel: 1-631-559-9269 1-516-512-3133

 Email: info@creative-biomart.com  Fax: 1-631-938-8127

 45-1 Ramsey Road, Shirley, NY 11967, USA