

Recombinant Full Length Human IGFBPL1 Protein, C-Flag-tagged

Cat. No. IGFBPL1-667HFL **Lot. No.** (See product label)

SPECIFICATION

Product Overview	Recombinant Full Length Human IGFBPL1 Protein, fused to Flag-tag at C-terminus, was expressed in Mammalian cells.
Species	Human
Source	Mammalian Cells
Description	Predicted to enable insulin-like growth factor binding activity. Involved in cellular response to tumor cell. Located in extracellular space.
Form	25 mM Tris HCl, pH 7.3, 100 mM glycine, 10% glycerol.
Molecular Mass	28.8 kDa
AA Sequence	MPRLSLLLPLLLLLLLPLLPPLSPSLGIRDVGGRRPKCGPCRPEGCPAPAPCPAPGIS ALDECGCCARCL GAEGASCGGRAGGRCGPGLVCASQAAGAAPEGTGLCVCAQR GTVCGSDGRSYPVCALRLRARHTPRAHP GHLHKARDGPCEFAPVVVPPRSVHN VTGAQVGLSCEVRAVPTPVITWRKVTKSPEGTQALEELPGDHVN IAVQVRGGPSDH EATAWILINPLRKEDEGVYQCHAANMVGEAESHSTVTVLDLSKYRSFHFPAPDDRM TRTRPLEQKLISEEDLAANDILDYKDDDDKV
Purity	> 80% as determined by SDS-PAGE and Coomassie blue staining.
Stability	Stable for 12 months from the date of receipt of the product under proper storage and

 Tel: 1-631-559-9269 1-516-512-3133

 Email: info@creative-biomart.com  Fax: 1-631-938-8127

 45-1 Ramsey Road, Shirley, NY 11967, USA

handling conditions. Avoid repeated freeze-thaw cycles.

Storage Store at -80 centigrade.

Concentration >50 ug/mL as determined by microplate BCA method.

Preparation Recombinant protein was captured through anti-DDK affinity column followed by conventional chromatography steps.

Full Length Full L.

GENE INFORMATION

Gene Name [IGFBPL1 insulin like growth factor binding protein like 1 \[Homo sapiens \(human\) \]](#)

Official Symbol [IGFBPL1](#)

Synonyms [IGFBPRP4](#); [IGFBP-RP4](#); [bA113O24.1](#)

Gene ID [347252](#)

mRNA Refseq [NM_001007563.3](#)

Protein Refseq [NP_001007564.1](#)

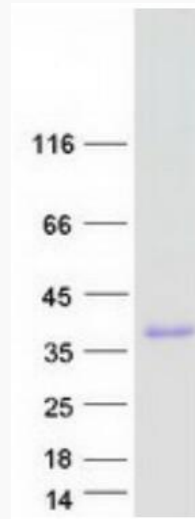
MIM [610413](#)

UniProt ID [Q8WX77](#)

 Tel: 1-631-559-9269 1-516-512-3133

 Email: info@creative-biomart.com  Fax: 1-631-938-8127

 45-1 Ramsey Road, Shirley, NY 11967, USA



Coomassie blue staining of purified IGFBPL1 protein.

 Tel: 1-631-559-9269 1-516-512-3133

 Email: info@creative-biomart.com  Fax: 1-631-938-8127

 45-1 Ramsey Road, Shirley, NY 11967, USA