

# Recombinant Human IGFL1 Protein (25-110 aa), His-Myc-tagged

**Cat. No.** IGFL1-2627H    **Lot. No.** (See product label)

## SPECIFICATION

<b>Product Overview</b>	Recombinant Human IGFL1 Protein (25-110 aa) is produced by E. coli expression system. This protein is fused with a 10xHis tag at the N-terminal and a Myc tag at the C-terminal. Protein Description: Full Length of Mature Protein.
<b>Species</b>	E.coli
<b>Source</b>	E.coli
<b>ProteinLength</b>	25-110 aa
<b>Form</b>	Tris-based buffer,50% glycerol
<b>Molecular Mass</b>	16.8 kDa
<b>AA Sequence</b>	APVAPMTPYLMLCQPHKRCGDKFYDPLQHCCYDDAVVPLARTQTCGNCTFRVCFE QCCPWTFMVKLINQNCDSARTSDDRLCRSVS
<b>Purity</b>	> 85% as determined by SDS-PAGE.
<b>Notes</b>	Repeated freezing and thawing is not recommended. Store working aliquots at 4 centigrade for up to one week.
<b>Storage</b>	The shelf life is related to many factors, storage state, buffer ingredients, storage temperature and the stability of the protein itself. Generally, the shelf life of liquid form

 Tel: 1-631-559-9269    1-516-512-3133

 Email: [info@creative-biomart.com](mailto:info@creative-biomart.com)     Fax: 1-631-938-8127

 45-1 Ramsey Road, Shirley, NY 11967, USA

is 6 months at -20 centigrade/-80 centigrade. The shelf life of lyophilized form is 12 months at -20 centigrade/-80 centigrade.

**Concentration**

A hardcopy of COA will be sent along with the products. Please refer to it for detailed information.

## GENE INFORMATION

**Gene Name** IGFL1 IGF-like family member 1 [ Homo sapiens ]

**Official Symbol** IGFL1

**Synonyms** UNQ644; APRG644;

**Gene ID** 374918

**mRNA Refseq** NM\_198541.1

**Protein Refseq** NP\_940943.1

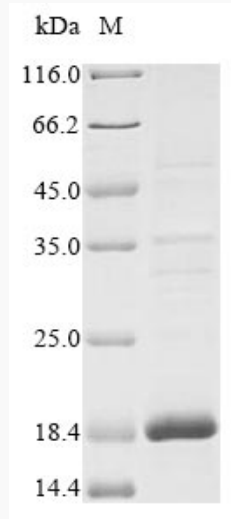
**MIM** 610544

**UniProt ID** Q6UW32

 Tel: 1-631-559-9269 1-516-512-3133

 Email: [info@creative-biomart.com](mailto:info@creative-biomart.com)  Fax: 1-631-938-8127

 45-1 Ramsey Road, Shirley, NY 11967, USA



(Tris-Glycine gel) Discontinuous SDS-PAGE (reduced) with 5% enrichment gel and 15% separation gel.

 Tel: 1-631-559-9269 1-516-512-3133

 Email: [info@creative-biomart.com](mailto:info@creative-biomart.com)  Fax: 1-631-938-8127

 45-1 Ramsey Road, Shirley, NY 11967, USA