

Recombinant Human IGFL1 Protein, Myc/DDK-tagged, C13 and N15-labeled

Cat. No. IGFL1-3439H **Lot. No.** (See product label)

SPECIFICATION

Product Overview	IGFL1 MS Standard C13 and N15-labeled recombinant protein (NP_940943) with a C-terminal MYC/DDK tag, was expressed in HEK293 cells.
Species	Human
Source	HEK293
Description	The protein encoded by this gene is a member of the insulin-like growth factor family of signaling molecules. The encoded protein is synthesized as a precursor protein and is proteolytically cleaved to form a secreted mature peptide. The mature peptide binds to a receptor, which in mouse was found on the cell surface of T cells. Increased expression of this gene may be linked to psoriasis.
Molecular Mass	12.2 kDa
AA Sequence	MAPRGCIVAVFAIFCISRLLCSHGAPVAPMTPYLMLCQPHKRCGDKFYDPLQHCCYD DAVVPLARTQTTCGNCTFRVCFEQCCPWTFMVKLINQNCD SARTSDDRLCRSVSTR TRPLEQKLISEEDLAANDILDYKDDDDKV
Purity	> 80% as determined by SDS-PAGE and Coomassie blue staining
Stability	Stable for 3 months from receipt of products under proper storage and handling conditions.

 Tel: 1-631-559-9269 1-516-512-3133

 Email: info@creative-biomart.com  Fax: 1-631-938-8127

 45-1 Ramsey Road, Shirley, NY 11967, USA

Storage	Store at -80 centigrade. Avoid repeated freeze-thaw cycles.
----------------	---

Concentration	50 µg/mL as determined by BCA
----------------------	-------------------------------

Storage Buffer	100 mM glycine, 25 mM Tris-HCl, pH 7.3.
-----------------------	---

GENE INFORMATION

Gene Name	IGFL1 IGF like family member 1 [Homo sapiens (human)]
------------------	---

Official Symbol	IGFL1
------------------------	-------

Synonyms	IGFL1; IGF like family member 1; UNQ644; APRG644; insulin growth factor-like family member 1
-----------------	--

Gene ID	374918
----------------	--------

mRNA Refseq	NM_198541
--------------------	-----------

Protein Refseq	NP_940943
-----------------------	-----------

MIM	610544
------------	--------

UniProt ID	Q6UW32
-------------------	--------

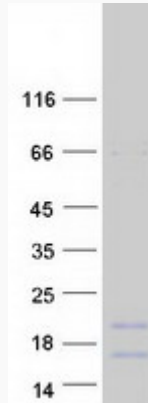
 Tel: 1-631-559-9269 1-516-512-3133

 Email: info@creative-biomart.com  Fax: 1-631-938-8127

 45-1 Ramsey Road, Shirley, NY 11967, USA



SDS-PAGE



Tel: 1-631-559-9269 1-516-512-3133

Email: info@creative-biomart.com Fax: 1-631-938-8127

45-1 Ramsey Road, Shirley, NY 11967, USA