

Recombinant Full Length Human IGFL1 Protein, C-Flag-tagged

Cat. No. IGFL1-416HFL **Lot. No.** (See product label)

SPECIFICATION

Product Overview	Recombinant Full Length Human IGFL1 Protein, fused to Flag-tag at C-terminus, was expressed in Mammalian cells.
Species	Human
Source	Mammalian Cells
Description	The protein encoded by this gene is a member of the insulin-like growth factor family of signaling molecules. The encoded protein is synthesized as a precursor protein and is proteolytically cleaved to form a secreted mature peptide. The mature peptide binds to a receptor, which in mouse was found on the cell surface of T cells. Increased expression of this gene may be linked to psoriasis.
Form	25 mM Tris HCl, pH 7.3, 100 mM glycine, 10% glycerol.
Molecular Mass	12.2 kDa
AA Sequence	MAPRGCIVAVFAIFCISRLLC SHGAPVAPMTPYLMLCQPHKRCGDKFYDPLQHCCYD DAVVPLARTQTCG NCTFRVCFEQCCPWTFMVKLINQNCDSARTSDDRRCRSVSTRTRPLEQKLISEEDL AANDILDYKDDDDKV
Purity	> 80% as determined by SDS-PAGE and Coomassie blue staining.
Stability	Stable for 12 months from the date of receipt of the product under proper storage and

 Tel: 1-631-559-9269 1-516-512-3133

 Email: info@creative-biomart.com  Fax: 1-631-938-8127

 45-1 Ramsey Road, Shirley, NY 11967, USA

	handling conditions. Avoid repeated freeze-thaw cycles.
Storage	Store at -80 centigrade.
Concentration	>50 ug/mL as determined by microplate BCA method.
Preparation	Recombinant protein was captured through anti-DDK affinity column followed by conventional chromatography steps.
Protein Families	Secreted Protein, Transmembrane
Full Length	Full L.

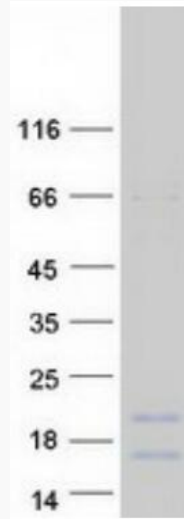
GENE INFORMATION

Gene Name	IGFL1 IGF like family member 1 [Homo sapiens (human)]
Official Symbol	IGFL1
Synonyms	UNQ644; APRG644
Gene ID	374918
mRNA Refseq	NM_198541.2
Protein Refseq	NP_940943.1
MIM	610544
UniProt ID	Q6UW32

 Tel: 1-631-559-9269 1-516-512-3133

 Email: info@creative-biomart.com  Fax: 1-631-938-8127

 45-1 Ramsey Road, Shirley, NY 11967, USA



Coomassie blue staining of purified IGFL1 protein.

 Tel: 1-631-559-9269 1-516-512-3133

 Email: info@creative-biomart.com  Fax: 1-631-938-8127

 45-1 Ramsey Road, Shirley, NY 11967, USA