

Recombinant Human IGFL1 protein, mFc-tagged

Cat. No. IGFL1-8753H Lot. No. (See product label)

SPECIFICATION

Product Overview	Recombinant Human IGFL1 protein(Q6UW32)(25-110aa), fused with C-terminal mFc tag, was expressed in HEK293.
Species	Human
Source	HEK293
ProteinLength	25-110aa
Tag	C-mFc
Form	If the delivery form is liquid, the default storage buffer is Tris/PBS-based buffer, 5%-50% glycerol. If the delivery form is lyophilized powder, the buffer before lyophilization is Tris/PBS-based buffer, 6% Trehalose, pH 8.0.
Molecular Mass	39.2 kDa
Purity	Greater than 90% as determined by SDS-PAGE. Greater than 90% as determined by SEC-HPLC.
Storage	Store at -20°C/-80°C upon receipt, aliquoting is necessary for mutiple use. Avoid repeated freeze-thaw cycles.
Reconstitution	We recommend that this vial be briefly centrifuged prior to opening to bring the contents to the bottom. Please reconstitute protein in deionized sterile water to a

 Tel: 1-631-559-9269 1-516-512-3133

 Email: info@creative-biomart.com  Fax: 1-631-938-8127

 45-1 Ramsey Road, Shirley, NY 11967, USA

concentration of 0.1-1.0 mg/mL. We recommend to add 5-50% of glycerol (final concentration) and aliquot for long-term storage at -20°C/-80°C.

AA Sequence

APVAPMTPYLMLCQPHKRCGDKFYDPLQHCCYDDAVVPLARTQTTCGNCTFRVCFE
QCCPWTFMVKLINQNCDSARTSDDRLCRSVS

GENE INFORMATION

Gene Name IGFL1 IGF-like family member 1 [Homo sapiens]

Official Symbol IGFL1

Synonyms UNQ644; APRG644

Gene ID 374918

mRNA Refseq NM_198541.1

Protein Refseq NP_940943.1

MIM 610544

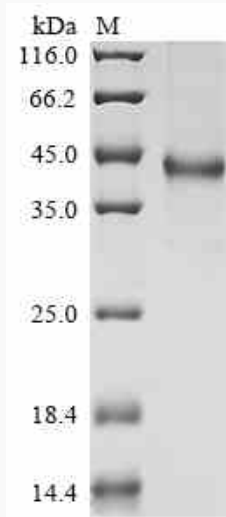
UniProt ID Q6UW32

 Tel: 1-631-559-9269 1-516-512-3133

 Email: info@creative-biomart.com  Fax: 1-631-938-8127

 45-1 Ramsey Road, Shirley, NY 11967, USA

SDS-PAGE



 Tel: 1-631-559-9269 1-516-512-3133

 Email: info@creative-biomart.com  Fax: 1-631-938-8127

 45-1 Ramsey Road, Shirley, NY 11967, USA