

# Recombinant Human IGFN1 Protein, Myc/DDK-tagged, C13 and N15-labeled

**Cat. No.** IGFN1-4488H    **Lot. No.** (See product label)

## SPECIFICATION

<b>Product Overview</b>	IGFN1 MS Standard C13 and N15-labeled recombinant protein (NP_840059) with a C-terminal MYC/DDK tag, was expressed in HEK293 cells.
<b>Species</b>	Human
<b>Source</b>	HEK293
<b>Description</b>	IGFN1 (Immunoglobulin Like And Fibronectin Type III Domain Containing 1) is a Protein Coding gene. Diseases associated with IGFN1 include Ullrich Congenital Muscular Dystrophy 1. An important paralog of this gene is HMCN1.
<b>Molecular Mass</b>	94.1 kDa
<b>AA Sequence</b>	<p>MGWQPMGENWGCLEEMLNEDQSREPPGHLGSRSGKDGRLDIYGERRDATRSS          TSTRYKPGTGSFSKDAQGPMPGHFSQGLADMEVQPGEAATLSCTLTSDLGPGTWFKD          GVKLTTQDGVIFKQDGLVHSLFITHVQGTQAGRYTFVAGDQQSEATLTVQDSPTIAP          DVTEKLREPLVVKAGKPVIVKIPFQSHLPIQAAWRKDGAEVVGSSDREAQVDLGDGY          TRLCPLSAGRKDCGQYSVTLRSEGGSVQAEHLTQVIDKPDPPQGPMEVQDCHRAG          VCLRWRPPRDNGGRTVECYVVERRQAGRSTWLKVGEAPADSTFTDAHVEPGRK          YTFRVRAVTSEGAGEALESEEILVAPEALPKAPSAPAILSASSQGITLWTAPRGPGS          AHILGYLIERRKKSNTWTAVNDQVPERRRWTVADVRQGCQYEFRTAVAPSGPG          EPGPPSDAVFARDPMRPPGLVRNLQVTDRSNTSITLSWAGPDTQEGDEAQQGYVVE          LCSSDSLQWLPCHVGTVPVTTYTAKGLRPGEGYFVRVTAVNEGGQSQPSALDTLV</p>

 Tel: 1-631-559-9269    1-516-512-3133

 Email: [info@creative-biomart.com](mailto:info@creative-biomart.com)     Fax: 1-631-938-8127

 45-1 Ramsey Road, Shirley, NY 11967, USA

QAMPVTVCPKFLVDSSTKDLLTVKVGDTVVRVPVSFEAMPMPPEVTWLKDGLPLPKRS  
 VVTVKDGLTQLLIPVAGLSDSGLYTVVLRTLQGKEVAHSFRIRVAACPQAPGPIHLQE  
 NVPGTVTAEWEPSPDEAQDVPLHYAVFTRSSAHGPWHEAADRIYTNRFTLLGILPG  
 HEYHFRVVAKNELGASKPSDTSQPWCIPRQRDRFTVKAPCYREPDL SQKPRFLVGL  
 RSHLLPQGCECCMSCAVQGSPRPHVTWFKNDRSLEGNPAVYSTDLLGVCSLTIPSV  
 SPKDSGEYKAVAENTLGQAVSTATLIVIEPSTTRTRPLEQKLISEEDLAANDILDYKDD  
 DDKV

**Purity** > 80% as determined by SDS-PAGE and Coomassie blue staining

**Stability** Stable for 3 months from receipt of products under proper storage and handling conditions.

**Storage** Store at -80 centigrade. Avoid repeated freeze-thaw cycles.

**Concentration** 50 µg/mL as determined by BCA

**Storage Buffer** 100 mM glycine, 25 mM Tris-HCl, pH 7.3.

## GENE INFORMATION

**Gene Name** IGFN1 immunoglobulin-like and fibronectin type III domain containing 1 [ Homo sapiens (human) ]

**Official Symbol** IGFN1

**Synonyms** IGFN1; immunoglobulin-like and fibronectin type III domain containing 1; immunoglobulin-like and fibronectin type III domain-containing protein 1; DKFZp434B1231; EEF1A2BP1; eEF1A2 binding protein; EEF1A2-binding protein 1; KY-interacting protein 1;

 Tel: 1-631-559-9269 1-516-512-3133

 Email: [info@creative-biomart.com](mailto:info@creative-biomart.com)  Fax: 1-631-938-8127

 45-1 Ramsey Road, Shirley, NY 11967, USA

Gene ID 91156

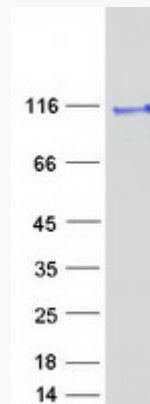
mRNA Refseq NM\_178275

Protein Refseq NP\_840059

MIM 617309

UniProt ID Q86VF2

SDS-PAGE



Tel: 1-631-559-9269 1-516-512-3133

Email: [info@creative-biomart.com](mailto:info@creative-biomart.com) Fax: 1-631-938-8127

45-1 Ramsey Road, Shirley, NY 11967, USA