

## Recombinant Mouse IGHE protein, His-Avi-tagged

**Cat. No.** IGHE-4533M    **Lot. No.** (See product label)

### SPECIFICATION

|                         |  |
|-------------------------|--|
| <b>Product Overview</b> | Recombinant Mouse IGHE protein(P06336)(Asp198-Ser421), fused with C-terminal His and Avi tag, was expressed in HEK293.                   |
| <b>Species</b>          | Mouse  |
| <b>Source</b>           | HEK293   |
| <b>ProteinLength</b>    | Asp198-Ser421  |
| <b>Tag</b>              | C-His-Avi  |
| <b>Form</b>             | Lyophilized from 0.22µm filtered solution in PBS (pH 7.4). Normally 8% trehalose is added as protectant before lyophilization.           |
| <b>Molecular Mass</b>   | The protein has a predicted MW of 28.2 kDa. Due to glycosylation, the protein migrates to 30-40 kDa based on Tris-Bis PAGE result.       |
| <b>Endotoxin</b>        | Less than 1EU per µg by the LAL method.  |
| <b>Purity</b>           | > 95% as determined by Tris-Bis PAGE; > 95% as determined by HPLC  |
| <b>Storage</b>          | Reconstituted protein stable at -80°C for 12 months, 4°C for 1 week. Use a manual defrost freezer and avoid repeated freeze-thaw cycles. |
| <b>Reconstitution</b>   | Centrifuge tubes before opening. Reconstituting to a concentration more than 100   |

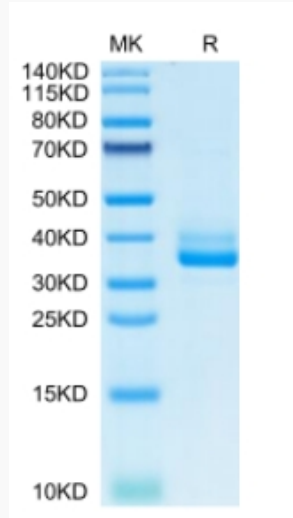
 Tel: 1-631-559-9269    1-516-512-3133

 Email: [info@creative-biomart.com](mailto:info@creative-biomart.com)     Fax: 1-631-938-8127

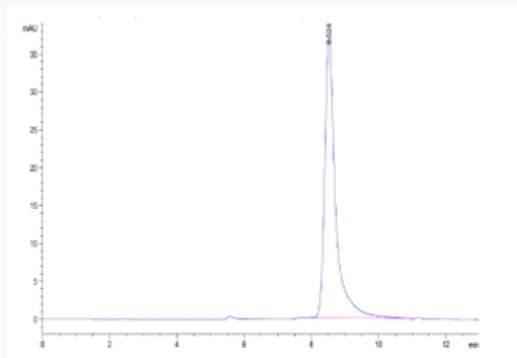
 45-1 Ramsey Road, Shirley, NY 11967, USA

µg/ml is recommended. Dissolve the lyophilized protein in distilled water.

**Tris-Bis PAGE**



**SEC-HPLC**



 Tel: 1-631-559-9269 1-516-512-3133

 Email: [info@creative-biomart.com](mailto:info@creative-biomart.com)  Fax: 1-631-938-8127

 45-1 Ramsey Road, Shirley, NY 11967, USA