

## Recombinant Human IGHG1 protein

Cat. No. IGHG1-0289H Lot. No. (See product label)

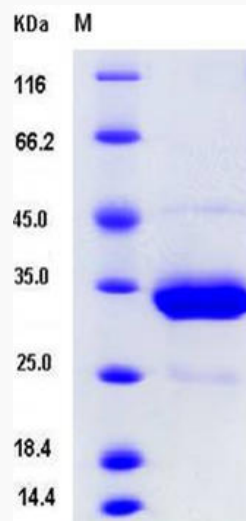
### SPECIFICATION

<b>Product Overview</b>	Recombinant Human IGHG1 protein(AAC82527.1) (Glu 99-Lys 330) (one aa mutation,103 Cys/Ser) was expressed in CHO.
<b>Species</b>	Human
<b>Source</b>	CHO
<b>ProteinLength</b>	99-330 aa
<b>Form</b>	Lyophilized from sterile PBS, pH 7.4.
<b>Molecular Mass</b>	The recombinant human IgG1 Fc consists of 232 amino acids and has a predicted molecular mass of 26 kDa. As a result of glycosylation, the apparent molecular mass of rhFc is approximately 34 kDa in SDS-PAGE under reducing conditions.
<b>Endotoxin</b>	< 1.0 EU per µg of the protein as determined by the LAL method.
<b>Purity</b>	> 92 % as determined by SDS-PAGE
<b>Storage</b>	Store it under sterile conditions at -20°C to -80°C upon receiving. Recommend to aliquot the protein into smaller quantities for optimal storage. Avoid repeated freeze-thaw cycles.
<b>Reconstitution</b>	It is recommended that sterile water be added to the vial to prepare a stock solution of 0.2 ug/ul. Centrifuge the vial at 4°C before opening to recover the entire contents.

 Tel: 1-631-559-9269 1-516-512-3133

 Email: [info@creative-biomart.com](mailto:info@creative-biomart.com)  Fax: 1-631-938-8127

 45-1 Ramsey Road, Shirley, NY 11967, USA

**GENE INFORMATION****Gene Name** IGHG1 Immunoglobulin heavy constant gamma 1(G1m marker) [ Homo sapiens ]**Official Symbol** IGHG1**Synonyms** IGHG1; Immunoglobulin heavy constant gamma 1(G1m marker);**Gene ID** 28221**SDS-PAGE** Tel: 1-631-559-9269 1-516-512-3133 Email: [info@creative-biomart.com](mailto:info@creative-biomart.com)  Fax: 1-631-938-8127 45-1 Ramsey Road, Shirley, NY 11967, USA