

Recombinant Human IGHG1 protein

Cat. No. IGHG1-0662H Lot. No. (See product label)

SPECIFICATION

Product Overview	Recombinant Human IGHG1 protein(P01857)(Asp103-Lys330) was expressed in HEK293.
Species	Human
Source	HEK293
ProteinLength	Asp103-Lys330
Tag	Non
Form	Lyophilized from 0.22µm filtered solution in PBS (pH 7.4). Normally 5% trehalose is added as protectant before lyophilization.
Bio-activity	Human FcRn, His Tag captured on CM5 Chip via anti-his antibody can bind Human IgG1 Fc, No Tag with an affinity constant of 0.28 uM as determined in SPR assay (Biacore T200).
Molecular Mass	The protein has a predicted MW of 25.5 kDa. Due to glycosylation, the protein migrates to 31-33 kDa based on Tris-Bis PAGE result.
Endotoxin	Less than 1EU per µg by the LAL method.
Purity	> 95% as determined by Tris-Bis PAGE;> 95% as determined by HPLC

 Tel: 1-631-559-9269 1-516-512-3133

 Email: info@creative-biomart.com  Fax: 1-631-938-8127

 45-1 Ramsey Road, Shirley, NY 11967, USA

Storage Reconstituted protein stable at -80°C for 12 months, 4°C for 1 week. Use a manual defrost freezer and avoid repeated freeze-thaw cycles.

Reconstitution Centrifuge tubes before opening. Reconstituting to a concentration more than 100 µg/ml is recommended. Dissolve the lyophilized protein in distilled water.

GENE INFORMATION

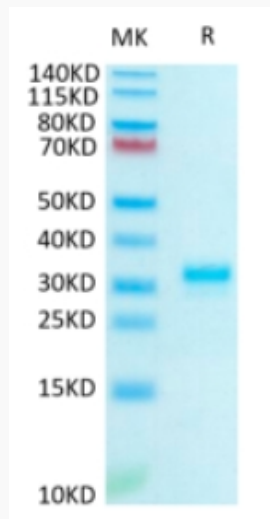
Gene Name [IGHG1 Immunoglobulin heavy constant gamma 1\(G1m marker\) \[Homo sapiens \]](#)

Official Symbol [IGHG1](#)

Synonyms IGHG1; Immunoglobulin heavy constant gamma 1(G1m marker);

Gene ID [28221](#)

Tris-Bis PAGE



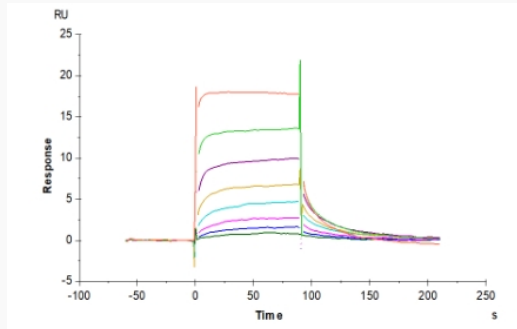
Tel: 1-631-559-9269 1-516-512-3133

Email: info@creative-biomart.com Fax: 1-631-938-8127

45-1 Ramsey Road, Shirley, NY 11967, USA



SPR Data



Tel: 1-631-559-9269 1-516-512-3133

Email: info@creative-biomart.com Fax: 1-631-938-8127

45-1 Ramsey Road, Shirley, NY 11967, USA