

Active Recombinant Human IGHG1 Protein, Non-tagged

Cat. No. IGHG1-101H Lot. No. (See product label)

SPECIFICATION

Product Overview	Recombinant Human IGHG1 Fc Protein (100-330aa), Non-tagged, was expressed in HEK293
Species	Human
Source	HEK293
ProteinLength	231aa
Description	Predicted to enable antigen binding activity and immunoglobulin receptor binding activity. Predicted to be involved in several processes, including activation of immune response; defense response to other organism; and phagocytosis. Predicted to act upstream of or within several processes, including immunoglobulin mediated immune response; positive regulation of hypersensitivity; and positive regulation of phagocytosis. Located in extracellular space.
Bio-activity	Measured by its binding ability in a functional ELISA with Human Fc gamma RIIIA/CD16a (CAT# ATGP3449). The ED50 range ≤ 1.5 ug/ml.
Molecular Mass	25.9kDa
Endotoxin	< 1 EU per 1ug of protein (determined by LAL method)
Purity	> 90% by SDS-PAGE

 Tel: 1-631-559-9269 1-516-512-3133

 Email: info@creative-biomart.com  Fax: 1-631-938-8127

 45-1 Ramsey Road, Shirley, NY 11967, USA

Applications	SDS-PAGE, Bioactivity
Storage	Can be stored at +2C to +8C for 1 week. For long term storage, aliquot and store at -20C to -80C. Avoid repeated freezing and thawing cycles.
Concentration	1mg/ml (determined by BCA assay)
Storage Buffer	Liquid in. Phosphate-Buffered Saline (pH 7.4) containing 10% glycerol

GENE INFORMATION

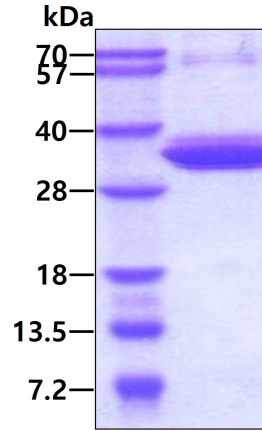
Gene Name	IGHG1 immunoglobulin heavy constant gamma 1 (G1m marker) [Homo sapiens (human)]
Official Symbol	IGHG1
Synonyms	Immunoglobulin heavy chain constant region gamma 1, IGHG1, Ig gamma-1 chain C region, Ig gamma-1 chain C region EU, Ig gamma-1 chain C region KOL, Ig gamma-1 chain C region NIE
Gene ID	3500
mRNA Refseq	NG_001019.6
MIM	254500
UniProt ID	P01857

 Tel: 1-631-559-9269 1-516-512-3133

 Email: info@creative-biomart.com  Fax: 1-631-938-8127

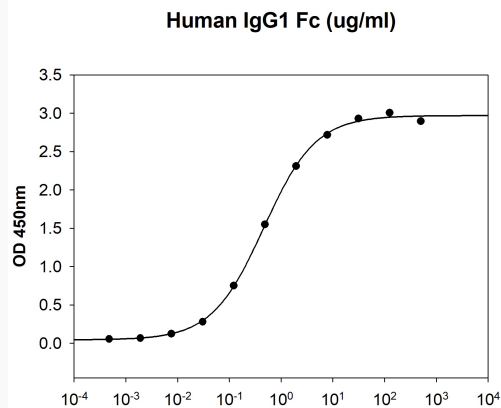
 45-1 Ramsey Road, Shirley, NY 11967, USA

SDS-PAGE



3ug by SDS-PAGE under reducing condition and visualized by coomassie blue stain

Biological Activity



Human Fc gamma RIIIA/CD16a is coated at 10 ug/ml (100 ul/well) can bind Human IgG1 Fc. The ED50 range ≤ 1.5 ug/ml.

 Tel: 1-631-559-9269 1-516-512-3133

 Email: info@creative-biomart.com  Fax: 1-631-938-8127

 45-1 Ramsey Road, Shirley, NY 11967, USA