

Recombinant Human IGHG1 Protein (1-330 aa), His-SUMO-tagged

Cat. No. IGHG1-575H **Lot. No.** (See product label)

SPECIFICATION

Product Overview	Recombinant Human IGHG1 Protein (1-330 aa) is produced by E. coli expression system. This protein is fused with a 6xHis-SUMO tag at the N-terminal. Research Area: Immunology. Protein Description: Full Length.
Species	Human
Source	E.coli
ProteinLength	1-330 aa
Form	Tris-based buffer, 50% glycerol
Molecular Mass	52.1 kDa
AA Sequence	ASTKGPSVFPLAPSSKSTSGGTAALGCLVKDYFPEPVTVSWNSGALTSGVHTFPAV LQSSGLYSLSSVTVPSSSLGTQTYICNVNHKPSNTKVDKKVEPKSCDKTHTCPPCP APPELLGGPSVFLFPPKPKDTLMISRTPEVTCVVDVSHEDPEVKFNWYVDGVEVHN AKTKPREEQYNSTYRVVSVLTVLHQDWLNGKEYKCKVSNKALPAPIEKTISKAKGQP REPQVYTLPPSRDELTKNQVSLTCLVKGFYPSDIAVEWESNGQPENNYKTTTPVLD SDGSFFLYSKLTVDKSRWQQGNVFSCSVMHEALHNHYTQKLSLSLSPGK
Purity	> 90% as determined by SDS-PAGE.
Notes	Repeated freezing and thawing is not recommended. Store working aliquots at 4

 Tel: 1-631-559-9269 1-516-512-3133

 Email: info@creative-biomart.com  Fax: 1-631-938-8127

 45-1 Ramsey Road, Shirley, NY 11967, USA

centigrade for up to one week.

Storage

The shelf life is related to many factors, storage state, buffer ingredients, storage temperature and the stability of the protein itself. Generally, the shelf life of liquid form is 6 months at -20 centigrade/-80 centigrade. The shelf life of lyophilized form is 12 months at -20 centigrade/-80 centigrade.

Concentration

A hardcopy of COA with concentration instruction is sent along with the products.

GENE INFORMATION

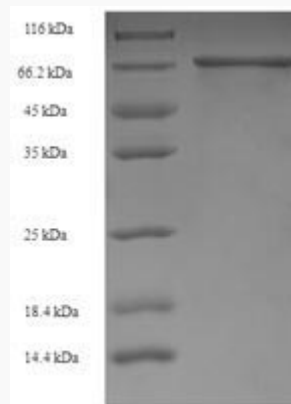
Gene Name [IGHG1 Immunoglobulin heavy constant gamma 1\(G1m marker\) \[Homo sapiens \]](#)

Official Symbol [IGHG1](#)

Synonyms IGHG1; Immunoglobulin heavy constant gamma 1(G1m marker);

Gene ID [28221](#)

UniProt ID [P01857](#)



 Tel: 1-631-559-9269 1-516-512-3133

 Email: info@creative-biomart.com  Fax: 1-631-938-8127

 45-1 Ramsey Road, Shirley, NY 11967, USA



(Tris-Glycine gel) Discontinuous SDS-PAGE (reduced) with 5% enrichment gel and 15% separation gel.

 Tel: 1-631-559-9269 1-516-512-3133

 Email: info@creative-biomart.com  Fax: 1-631-938-8127

 45-1 Ramsey Road, Shirley, NY 11967, USA