

Recombinant Human IGLC1 protein, His-tagged

Cat. No. IGLC1-776H Lot. No. (See product label)

SPECIFICATION

Product Overview	Recombinant Human IGLC1 protein(POCG04)(1-106aa), fused with C-terminal His tag, was expressed in Yeast.
Species	Human
Source	Yeast
ProteinLength	1-106aa
Tag	C-His
Form	If the delivery form is liquid, the default storage buffer is Tris/PBS-based buffer, 5%-50% glycerol. If the delivery form is lyophilized powder, the buffer before lyophilization is Tris/PBS-based buffer, 6% Trehalose, pH 8.0.
Molecular Mass	13.4 kDa
Purity	Greater than 90% as determined by SDS-PAGE.
Storage	Store at -20°C/-80°C upon receipt, aliquoting is necessary for mutiple use. Avoid repeated freeze-thaw cycles.
Reconstitution	We recommend that this vial be briefly centrifuged prior to opening to bring the contents to the bottom. Please reconstitute protein in deionized sterile water to a concentration of 0.1-1.0 mg/mL. We recommend to add 5-50% of glycerol (final

 Tel: 1-631-559-9269 1-516-512-3133

 Email: info@creative-biomart.com  Fax: 1-631-938-8127

 45-1 Ramsey Road, Shirley, NY 11967, USA

concentration) and aliquot for long-term storage at -20°C/-80°C.

AA Sequence

GQPKANPTVTLFPPSSEELQANKATLVCLISDFYPGAVTVAWKADGSPVKAGVETTK
PSKQSNNKYAASSYLSLTPEQWKSHRSYSCQVTHEGSTVEKTVAPTECS

GENE INFORMATION

Gene Name [CCND1 cyclin D1 \[Homo sapiens \]](#)

Official Symbol [IGLC1](#)

Synonyms

CCND1; cyclin D1; BCL1; PRAD1; U21B31; D11S287E; B-cell CLL/lymphoma 1; G1/S-specific cyclin D1; cyclin D1 (PRAD1: parathyroid adenomatosis 1); parathyroid adenomatosis 1; BCL-1 oncogene; PRAD1 oncogene

Gene ID [595](#)

mRNA Refseq [NM_053056](#)

Protein Refseq [NP_444284](#)

MIM [168461](#)

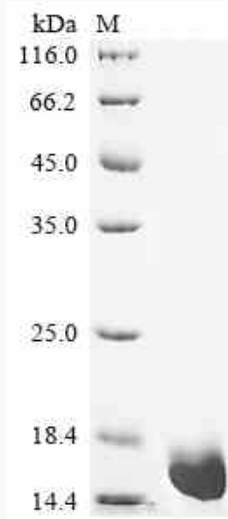
UniProt ID [P24385](#)

 Tel: 1-631-559-9269 1-516-512-3133

 Email: info@creative-biomart.com  Fax: 1-631-938-8127

 45-1 Ramsey Road, Shirley, NY 11967, USA

SDS-PAGE



 Tel: 1-631-559-9269 1-516-512-3133

 Email: info@creative-biomart.com  Fax: 1-631-938-8127

 45-1 Ramsey Road, Shirley, NY 11967, USA