

# Recombinant Human IGLL1 Protein (Leu29-Ser201), N-His tagged

Cat. No. IGLL1-1205H Lot. No. (See product label)

## SPECIFICATION

<b>Product Overview</b>	Recombinant Human CD179b/IGLL1 (Leu29-Ser201) fused with the N-His tag was expressed in E. coli.
<b>Species</b>	Human
<b>Source</b>	E.coli
<b>ProteinLength</b>	Leu29-Ser201
<b>Form</b>	Lyophilized powder/frozen liquid
<b>Molecular Mass</b>	21.08 kDa
<b>Purity</b>	>90% as determined by SDS-PAGE.
<b>Notes</b>	For research use only.
<b>Storage</b>	Use a manual defrost freezer and avoid repeated freeze thaw cycles. Store at 2 to 8 centigrade for one week. Store at -20 to -80 centigrade for twelve months from the date of receipt.
<b>Storage Buffer</b>	0.01M PBS, pH 7.4, 0.02% NLS
<b>Reconstitution</b>	Reconstitute in sterile water for a stock solution.

 Tel: 1-631-559-9269 1-516-512-3133

 Email: [info@creative-biomart.com](mailto:info@creative-biomart.com)  Fax: 1-631-938-8127

 45-1 Ramsey Road, Shirley, NY 11967, USA

**Shipping** They are shipped out with dry ice/blue ice unless customers require otherwise.

## GENE INFORMATION

**Gene Name** IGLL1 immunoglobulin lambda-like polypeptide 1 [ Homo sapiens (human) ]

**Official Symbol** IGLL1

**Synonyms** IGLL1; immunoglobulin lambda-like polypeptide 1; IGLL; 14.1; CD179B; IGL5; IGVPB; lambda5; ig lambda-5; CD179b antigen; CD179 antigen-like family member B; Pre-B lymphocyte-specific protein-2; immunoglobulin-related 14.1 protein; immunoglobulin-related protein 14.1; immunoglobulin omega polypeptide chain; IGO; AGM2; IGL1; CD179b; VPRESB2; IGLJ14.1;

**Gene ID** 3543

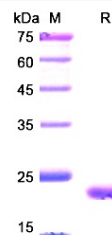
**mRNA Refseq** NM\_020070

**Protein Refseq** NP\_064455

**MIM** 146770

**UniProt ID** P15814

## SDS-PAGE



 Tel: 1-631-559-9269 1-516-512-3133

 Email: [info@creative-biomart.com](mailto:info@creative-biomart.com)  Fax: 1-631-938-8127

 45-1 Ramsey Road, Shirley, NY 11967, USA