

Recombinant Human IGLL1 Protein (Met1-Ser213), C-His tagged

Cat. No. IGLL1-4264H Lot. No. (See product label)

SPECIFICATION

Product Overview	Recombinant human IGLL1 (Met1-Ser213) fused with the C-terminal His tag was expressed in Mammalian cells.
Species	Human
Source	Mammalian Cells
ProteinLength	Met1-Ser213
Form	Lyophilized powder/frozen liquid
Molecular Mass	23.43 kDa
Endotoxin	< 1.0 EU/μg of the protein as determined by the LAL method.
Purity	>90% as determined by SDS-PAGE.
Notes	For research use only.
Storage	Use a manual defrost freezer and avoid repeated freeze thaw cycles. Store at 2 to 8 centigrade for one week. Store at -20 to -80 centigrade for twelve months from the date of receipt.
Storage Buffer	Supplied as solution form in PBS or lyophilized from PBS.

 Tel: 1-631-559-9269 1-516-512-3133

 Email: info@creative-biomart.com  Fax: 1-631-938-8127

 45-1 Ramsey Road, Shirley, NY 11967, USA

Reconstitution Reconstitute in sterile water for a stock solution.

Shipping They are shipped out with dry ice/blue ice unless customers require otherwise.

GENE INFORMATION

Gene Name [IGLL1 immunoglobulin lambda-like polypeptide 1 \[Homo sapiens \(human\) \]](#)

Official Symbol [IGLL1](#)

Synonyms IGLL1; immunoglobulin lambda-like polypeptide 1; IGLL; 14.1; CD179B; IGL5; IGVPB; lambda5; ig lambda-5; CD179b antigen; CD179 antigen-like family member B; Pre-B lymphocyte-specific protein-2; immunoglobulin-related 14.1 protein; immunoglobulin-related protein 14.1; immunoglobulin omega polypeptide chain; IGO; AGM2; IGL1; CD179b; VPREB2; IGLJ14.1;

Gene ID [3543](#)

mRNA Refseq [NM_020070](#)

Protein Refseq [NP_064455](#)

MIM [146770](#)

UniProt ID [P15814](#)

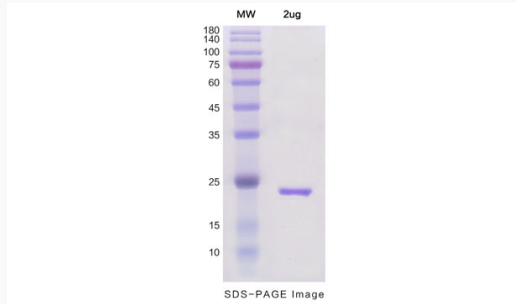
 Tel: 1-631-559-9269 1-516-512-3133

 Email: info@creative-biomart.com  Fax: 1-631-938-8127

 45-1 Ramsey Road, Shirley, NY 11967, USA



SDS-PAGE



Tel: 1-631-559-9269 1-516-512-3133

Email: info@creative-biomart.com Fax: 1-631-938-8127

45-1 Ramsey Road, Shirley, NY 11967, USA