

Recombinant Human IGLON5 Protein, Myc/DDK-tagged, C13 and N15-labeled

Cat. No. IGLON5-5568H **Lot. No.** (See product label)

SPECIFICATION

Product Overview	IGLON5 MS Standard C13 and N15-labeled recombinant protein (NP_001094842) with a C-terminal MYC/DDK tag, was expressed in HEK293 cells.
Species	Human
Source	HEK293
Description	IGLON5 (IgLON Family Member 5) is a Protein Coding gene. Diseases associated with IGLON5 include Whipple Disease and Rem Sleep Behavior Disorder. An important paralog of this gene is OPCML.
Molecular Mass	36.6 kDa
AA Sequence	MPPPAPGARLRLLLAAAALAGLAVISRGLLSQSLEFNSPADNYTVCEGDNATLSCFIDE HVTRVAWLNRSNILYAGNDRWTSDPRVRLINTPEEFSILITEVGLGDEGLYTCSFQT RHQPYYTTQVYLIVHVPARIVNISSPVTVNEGGNVLLCLAVGRPEPTVTWRQLRDGF TSEGEILEISDIQRGQAGEYECVTHNGVNSAPDSRRVLVTVNYPPTITDVTSARTALG RAALLRCEAMAVPPADDFQWYKDDRLLSSGTAEGLKVQTERTRSMLLFANVSARHY GNYTCRAANRLGASSASMRLLRPGSLENSAPRPPGLLALLSALGWLWWRMTRTRP LEQKLISEEDLAANDILDYKDDDDKV
Purity	> 80% as determined by SDS-PAGE and Coomassie blue staining
Stability	Stable for 3 months from receipt of products under proper storage and handling

 Tel: 1-631-559-9269 1-516-512-3133

 Email: info@creative-biomart.com  Fax: 1-631-938-8127

 45-1 Ramsey Road, Shirley, NY 11967, USA

conditions.

Storage Store at -80 centigrade. Avoid repeated freeze-thaw cycles.

Concentration 50 µg/mL as determined by BCA

Storage Buffer 100 mM glycine, 25 mM Tris-HCl, pH 7.3.

GENE INFORMATION

Gene Name IGLON5 IgLON family member 5 [Homo sapiens (human)]

Official Symbol IGLON5

Synonyms IGLON5; IgLON family member 5; igLON family member 5; Ig-like domain-containing protein ENSP00000270642; hCG1651476

Gene ID 402665

mRNA Refseq NM_001101372

Protein Refseq NP_001094842

MIM 618861

UniProt ID A6NGN9

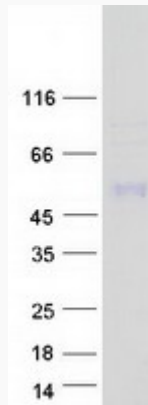
 Tel: 1-631-559-9269 1-516-512-3133

 Email: info@creative-biomart.com  Fax: 1-631-938-8127

 45-1 Ramsey Road, Shirley, NY 11967, USA



SDS-PAGE



Tel: 1-631-559-9269 1-516-512-3133

Email: info@creative-biomart.com Fax: 1-631-938-8127

45-1 Ramsey Road, Shirley, NY 11967, USA