

# Recombinant Human IGSF1 Full Length Transmembrane protein, His-tagged

**Cat. No.** IGSF1-1322H    **Lot. No.** (See product label)

## SPECIFICATION

<b>Product Overview</b>	Recombinant Human IGSF1 protein(Q8N6C5)(1-1336aa), fused to N-terminal His tag, was expressed in E. coli.
<b>Species</b>	Human
<b>Source</b>	E.coli
<b>ProteinLength</b>	1-1336aa
<b>Form</b>	<p>If the delivery form is liquid, the default storage buffer is Tris/PBS-based buffer, 5%-50% glycerol.</p> <p>If the delivery form is lyophilized powder, the buffer before lyophilization is Tris/PBS-based buffer, 6% Trehalose, pH 8.0.</p>
<b>Molecular Mass</b>	151.8 kDa
<b>AA Sequence</b>	<p>MTLDRPGE GATMLKTFTVLLFCIRMSLGMTSIVMDPQPELWIESNYPQAPWENITLW  CRSPSRISSKFLLLKDKTQMTWIRPSHKTFQVSFLIGALTESNAGLYRCCYWKETGW  SKPSKVLELEAPGQLPKPIFWIQAETPALPGCNVNILCHGWLQDLVFMLFKEGYAEP  VDYQVPTGTMAIFSIDNLTPEDG VYICRTHIQMLPTLWSEPSNPLKLVVAGLYPKPT  LTAHPGPIMAPGESLNLRCQGPIYGMTFALMRVEDLEKSFYHKKTIKNEANFFFQSL  KIQDTGHYLCFYDASYRGSLLSDVLKIWVTDTFPKTWLLARPSAVVQMGQNVSLR  CRGPVDGVGLALYKKGEDKPLQFLDATSIDDNTSFFLNNTYSDTGIYSCHYLLTWK  TSIRMP SHNTVELMVVDKPPKPSLSAWPSTVFKLGKAITLQCRVSHPVLEFSLEWEE</p>

 Tel: 1-631-559-9269    1-516-512-3133

 Email: [info@creative-biomart.com](mailto:info@creative-biomart.com)     Fax: 1-631-938-8127

 45-1 Ramsey Road, Shirley, NY 11967, USA

RETFQKFSVNGDFIISNVDGKGTGTYSYRVETHPNIWSHRSEPLKLMGPAGYLT  
 WNYVLNEAIRLSLIMQLVALLLVWLWIRWKCRRRLRIREAWLLGTAQGVTMLFIVTALL  
 CCGLCNGVLIETEIVMPTPKPELWAETNFPLAPWKNLTLWCRSPSGSTKEFVLLKD  
 GTGWIATRPASEQVRAAFPLGALTQSHTGSYHCHSWEEMAVSEPSEALELVGTDIL  
 PKPVISASPTIRGQELQLRCKGWLAGMGFALYKEGEQEPVQQLGAVGREAFFTIQR  
 MEDKDEGNYSRTHTEKRPFKWSEPSEPLELVIKEMYKPKPFFKTWASPVVTPGARV  
 TFNCSTPHQHMSFILYKDGSEIASSDRSWASPGASAAHFLIISVIGIGDGGNYSCRY  
 DFSIWSEPSDPVELVVTEFYKPTLLAQPGPVVFPKGSVILRCQGTGQGMRFALLQE  
 GAHVPLQFRSVSGNSADFLHTVGAEDSGNYSCIYYETTMSNRGSYLSMPLMIWVT  
 DTFPKPWLFAEPSSVPMGQNVTLWCRGPVHGVGYILHKEGEATSMQLWGSTSND  
 GAFFITNISGTSMGRYSCCYHPDWTSSIKIQPSNTLELLVTGLLPKPSLLAQPGPMVA  
 PGENMTLQCQGELPDSTFVLLKEGAQEPLEQQRPSGYRADFWMPAVRGEDSGIYS  
 CVYYLDSTPFAASNHSDSLEIWVTDKPPKPSLSAWPSTMFKLGKDITLQCRGPLPGV  
 EFVLEHDGEEAPQQFSEDGDFVINNVEGKGIGNYSCSYRLQAYPDIWSEPSDPLELV  
 GAAGPVAQECTVGNIVRSSLIVVVVALGVVLAIEWKKWPRLRTRGSETDGRDQTIA  
 LEECNQEGEPGTPANSPSSTSQRISVELPVI

**Purity** Greater than 85% as determined by SDS-PAGE.

**Storage** Store at -20°C/-80°C upon receipt, aliquoting is necessary for multiple use. Avoid repeated freeze-thaw cycles.


**Reconstitution** Please reconstitute protein in deionized sterile water to a concentration of 0.1-1.0 mg/mL. We recommend to add 5-50% of glycerol (final concentration) and aliquot for long-term storage at -20°C/-80°C. Our default final concentration of glycerol is 50%.

## GENE INFORMATION

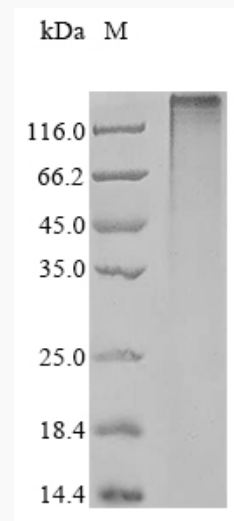
**Gene Name** IGSF1 immunoglobulin superfamily, member 1 [ Homo sapiens ]

 Tel: 1-631-559-9269 1-516-512-3133

 Email: [info@creative-biomart.com](mailto:info@creative-biomart.com)  Fax: 1-631-938-8127

 45-1 Ramsey Road, Shirley, NY 11967, USA

<b>Official Symbol</b>	IGSF1
<b>Synonyms</b>	IGSF1; immunoglobulin superfamily, member 1; immunoglobulin superfamily member 1; IGCD1; IGDC1; INHBP; KIAA0364; MGC75490; PGSF2; inhibin-binding protein; pituitary gland-specific factor 2; immunoglobulin-like domain-containing protein 1; p120;
<b>Gene ID</b>	3547
<b>mRNA Refseq</b>	NM_001170961
<b>Protein Refseq</b>	NP_001164432
<b>MIM</b>	300137
<b>UniProt ID</b>	Q8N6C5

**SDS-PAGE**


Tel: 1-631-559-9269 1-516-512-3133

Email: [info@creative-biomart.com](mailto:info@creative-biomart.com) Fax: 1-631-938-8127

45-1 Ramsey Road, Shirley, NY 11967, USA