

Recombinant Human IGSF1 Protein, His-tagged

Cat. No. IGSF1-344H Lot. No. (See product label)

SPECIFICATION

Product Overview	Recombinant Human IGSF1(Ala1008~Ser1227) fused with His tag at N-terminal was expressed in E. coli.
Species	Human
Source	E.coli
ProteinLength	Ala1008~Ser1227
Description	This gene encodes a member of the immunoglobulin-like domain-containing superfamily. Proteins in this superfamily contain varying numbers of immunoglobulin-like domains and are thought to participate in the regulation of interactions between cells. Multiple transcript variants encoding different isoforms have been found for this gene.
Form	PBS, pH7.4, containing 0.01% SKL, 1mM DTT, 5% Trehalose and Proclin300.
Molecular Mass	27.65kDa
Identity	Reconstitute in PBS or others
Endotoxin	<1.0EU per 1g (determined by the LAL method)
Purity	> 95%

 Tel: 1-631-559-9269 1-516-512-3133

 Email: info@creative-biomart.com  Fax: 1-631-938-8127

 45-1 Ramsey Road, Shirley, NY 11967, USA

Applications	Positive Control; Immunogen; SDS-PAGE; WB. If bio-activity of the protein is needed, please check active protein
Stability	The thermal stability is described by the loss rate. The loss rate was determined by accelerated thermal degradation test, that is, incubate the protein at 37 centigrade for 48h, and no obvious degradation and precipitation were observed. The loss rate is less than 5% within the expiration date under appropriate storage condition.
Storage	Avoid repeated freeze/thaw cycles. Store at 2-8 centigrade for one month. Aliquot and store at -80 centigrade for 12 months.
Reconstitution	Reconstitute in PBS or others

GENE INFORMATION

Gene Name	IGSF1 immunoglobulin superfamily, member 1 [Homo sapiens]
Official Symbol	IGSF1
Synonyms	IGSF1; immunoglobulin superfamily, member 1; immunoglobulin superfamily member 1; IGCD1; IGDC1; INHBP; KIAA0364; MGC75490; PGSF2; inhibin-binding protein; pituitary gland-specific factor 2; immunoglobulin-like domain-containing protein 1; p120;
Gene ID	3547
mRNA Refseq	NM_001170961
Protein Refseq	NP_001164432
MIM	300137

 Tel: 1-631-559-9269 1-516-512-3133

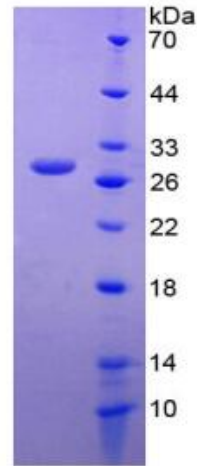
 Email: info@creative-biomart.com  Fax: 1-631-938-8127

 45-1 Ramsey Road, Shirley, NY 11967, USA



UniProt ID

Q8N6C5



15% SDS-PAGE

Tel: 1-631-559-9269 1-516-512-3133

Email: info@creative-biomart.com Fax: 1-631-938-8127

45-1 Ramsey Road, Shirley, NY 11967, USA