

# Recombinant human immunoglobulin superfamily member 10 Protein, GST tagged

Cat. No. IGSF10-12H Lot. No. (See product label)

## SPECIFICATION

<b>Product Overview</b>	Human IGSF10 partial ORF (NP_849144, 301-399 a.a.) recombinant protein with GST-tag at N-terminal was expressed in Wheat Germ (in vitro).
<b>Species</b>	Human
<b>Source</b>	Wheat Germ
<b>ProteinLength</b>	301-399aa
<b>Description</b>	Predicted to be involved in regulation of neuron migration. Predicted to act upstream of or within ossification. Located in extracellular region.
<b>Tag</b>	N-GST
<b>Molecular Mass</b>	36.63 kDa
<b>AA Sequence</b>	SAFISPQGFMAPFGSLTLNMTDQSGNEANMVCSIQKPSRTSPIAFTEENDYIVLNTSF STFLVCNIDYGHIQPVWQILALYSDSPLILERSHLLSETPQ
<b>Quality Control Testing</b>	12.5% SDS-PAGE Stained with Coomassie Blue.
<b>Applications</b>	Enzyme-linked Immunoabsorbent Assay Western Blot (Recombinant protein)

 Tel: 1-631-559-9269 1-516-512-3133

 Email: [info@creative-biomart.com](mailto:info@creative-biomart.com)  Fax: 1-631-938-8127

 45-1 Ramsey Road, Shirley, NY 11967, USA

	Antibody Production Protein Array
<b>Notes</b>	Best use within three months from the date of receipt of this protein.
<b>Storage</b>	Store at -80 centigrade. Aliquot to avoid repeated freezing and thawing.
<b>Storage Buffer</b>	50 mM Tris-HCl, 10 mM reduced Glutathione, pH8.0 in the elution buffer.
<b>GENE INFORMATION</b>	
<b>Gene Name</b>	IGSF10 immunoglobulin superfamily member 10 [ Homo sapiens (human) ]
<b>Official Symbol</b>	IGSF10
<b>Synonyms</b>	IGSF10; immunoglobulin superfamily member 10; CMF608; immunoglobulin superfamily member 10; calvaria mechanical force protein 608
<b>Gene ID</b>	285313
<b>mRNA Refseq</b>	NM_178822
<b>Protein Refseq</b>	NP_849144
<b>MIM</b>	617351
<b>UniProt ID</b>	Q6WRI0

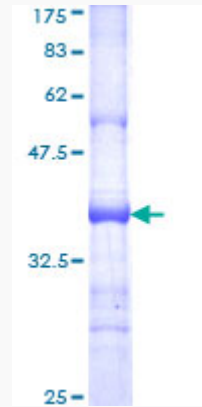
 Tel: 1-631-559-9269 1-516-512-3133

 Email: [info@creative-biomart.com](mailto:info@creative-biomart.com)  Fax: 1-631-938-8127

 45-1 Ramsey Road, Shirley, NY 11967, USA



SDS-PAGE



Tel: 1-631-559-9269 1-516-512-3133

Email: [info@creative-biomart.com](mailto:info@creative-biomart.com) Fax: 1-631-938-8127

45-1 Ramsey Road, Shirley, NY 11967, USA