

## Recombinant Human IGSF11 protein, His-tagged

Cat. No. IGSF11-1601H Lot. No. (See product label)

### SPECIFICATION

<b>Product Overview</b>	Recombinant Human IGSF11 protein(Q5DX21-1)(Leu23-Gly241), fused with C-terminal His tag, was expressed in HEK293.
<b>Species</b>	Human
<b>Source</b>	C-His
<b>ProteinLength</b>	Leu23-Gly241
<b>Tag</b>	C-His
<b>Form</b>	Lyophilized from 0.22µm filtered solution in PBS (pH 7.4). Normally 8% trehalose is added as protectant before lyophilization.
<b>Bio-activity</b>	Human B7-H5, hFc Tag captured on CM5 Chip via Protein A can bind Human VSIG3, His Tag with an affinity constant of 14.44 µM as determined in SPR assay (Biacore T200).
<b>Molecular Mass</b>	The protein has a predicted MW of 24.31 kDa. Due to glycosylation, the protein migrates to 35-40 kDa based on Tris-Bis PAGE result.
<b>Endotoxin</b>	Less than 1EU per µg by the LAL method.
<b>Purity</b>	> 95% as determined by Tris-Bis PAGE; > 95% as determined by HPLC.

 Tel: 1-631-559-9269 1-516-512-3133

 Email: [info@creative-biomart.com](mailto:info@creative-biomart.com)  Fax: 1-631-938-8127

 45-1 Ramsey Road, Shirley, NY 11967, USA

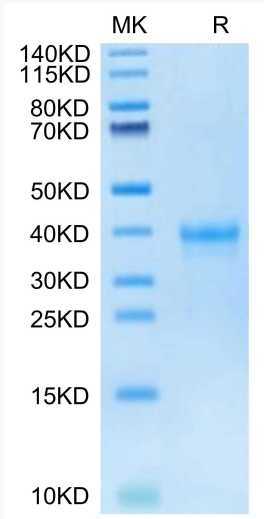
<b>Storage</b>	Reconstituted protein stable at -80°C for 12 months, 4°C for 1 week. Use a manual defrost freezer and avoid repeated freeze-thaw cycles.
<b>Reconstitution</b>	Centrifuge tubes before opening. Reconstituting to a concentration more than 100 µg/ml is recommended. Dissolve the lyophilized protein in distilled water.
<b>GENE INFORMATION</b>	
<b>Gene Name</b>	IGSF11 immunoglobulin superfamily, member 11 [ Homo sapiens ]
<b>Official Symbol</b>	IGSF11
<b>Synonyms</b>	IGSF11; immunoglobulin superfamily, member 11; immunoglobulin superfamily member 11; BT IgSF; cancer/testis antigen 119; CT119; Igsf13; MGC35227; VSIG3; CXADR like 1; V-set and immunoglobulin domain containing 3; V-set and immunoglobulin domain-containing protein 3; brain and testis-specific immunoglobulin superfamily protein; brain and testis-specific immunoglobulin superfamily protein; BT-IgSF; CXADRL1;
<b>Gene ID</b>	152404
<b>mRNA Refseq</b>	NM_001015887
<b>Protein Refseq</b>	NP_001015887
<b>MIM</b>	608351
<b>UniProt ID</b>	Q5DX21

 Tel: 1-631-559-9269 1-516-512-3133

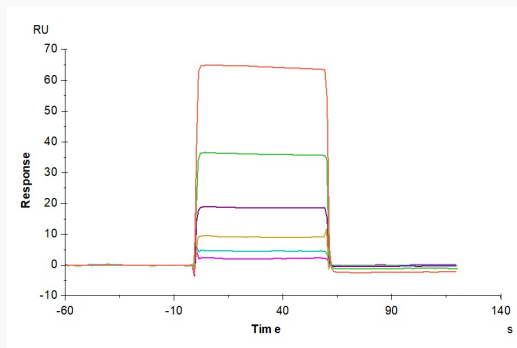
 Email: [info@creative-biomart.com](mailto:info@creative-biomart.com)  Fax: 1-631-938-8127

 45-1 Ramsey Road, Shirley, NY 11967, USA

**Tris-Bis PAGE**



**SPR**



 Tel: 1-631-559-9269 1-516-512-3133

 Email: [info@creative-biomart.com](mailto:info@creative-biomart.com)  Fax: 1-631-938-8127

 45-1 Ramsey Road, Shirley, NY 11967, USA