

Recombinant Human IGSF11 Protein, Myc/DDK-tagged, C13 and N15-labeled

Cat. No. IGSF11-4762H Lot. No. (See product label)

SPECIFICATION

Product Overview

IGSF11 MS Standard C13 and N15-labeled recombinant protein (NP_689751) with a C-terminal MYC/DDK tag, was expressed in HEK293 cells.

Species

Human

Source

HEK293

Description

IGSF11 is an immunoglobulin (Ig) superfamily member that is preferentially expressed in brain and testis. It shares significant homology with coxsackievirus and adenovirus receptor (CXADR) and endothelial cell-selective adhesion molecule (ESAM).

Molecular Mass

46.2 kDa

AA Sequence

```
MSLVELLWVWNCFSRTGVAASLEVSESPGSIQVARGQTAVLPCTFTTSAALINLNV
WMVTPLSNANQPEQVILYQGGQMF DGAPRFHGRVGF TGTMPATNVSIFINNTQLSD
TGTYQCLVNNLPDIGGRNIGVTGLTVLVPPSAPHCQIQGSQDIGSDVILLCSSEEGIP
RPTYLWEKLDNTLKL PPTATQDQVQGTVTIRNISALSSGLYQCVASNAIGTSTCLLDL
QVISPQPRNIGLIAGAIGTGAVIIIFCIALILGAFFYWR SKNKEEEEEIPNEIREDDLPPK
CSSAKAFHTEISSDNNTLTSSNAYNSRYWSNPKVHRNTESVSHFSDLGQSFSFH
SGNANIPSIYANGTHLVPGQHKT LVVTANRGSSPQVMSRSNGSVSRKPRPPHHSY
TISHATLERIGAVPVMVPAQSRAGSLVTRTRPLEQKLISEEDLAANDILDYKDDDDKV
```

Purity

> 80% as determined by SDS-PAGE and Coomassie blue staining

 Tel: 1-631-559-9269 1-516-512-3133

 Email: info@creative-biomart.com  Fax: 1-631-938-8127

 45-1 Ramsey Road, Shirley, NY 11967, USA

Stability	Stable for 3 months from receipt of products under proper storage and handling conditions.
Storage	Store at -80 centigrade. Avoid repeated freeze-thaw cycles.
Concentration	50 µg/mL as determined by BCA
Storage Buffer	100 mM glycine, 25 mM Tris-HCl, pH 7.3.

GENE INFORMATION

Gene Name	IGSF11 immunoglobulin superfamily member 11 [Homo sapiens (human)]
Official Symbol	IGSF11
Synonyms	IGSF11; immunoglobulin superfamily, member 11; immunoglobulin superfamily member 11; BT IgSF; cancer/testis antigen 119; CT119; Igsf13; MGC35227; VSIG3; CXADR like 1; V-set and immunoglobulin domain containing 3; V-set and immunoglobulin domain-containing protein 3; brain and testis-specific immunoglobulin superfamily protein; brain and testis-specific immunoglobulin superfamily protein; BT-IgSF; CXADRL1;
Gene ID	152404
mRNA Refseq	NM_152538
Protein Refseq	NP_689751
MIM	608351
UniProt ID	Q5DX21

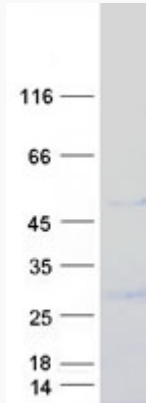
 Tel: 1-631-559-9269 1-516-512-3133

 Email: info@creative-biomart.com  Fax: 1-631-938-8127

 45-1 Ramsey Road, Shirley, NY 11967, USA



SDS-PAGE



Tel: 1-631-559-9269 1-516-512-3133

Email: info@creative-biomart.com Fax: 1-631-938-8127

45-1 Ramsey Road, Shirley, NY 11967, USA