

Recombinant Human IGSF21 Protein, GST-tagged

Cat. No. IGSF21-4352H **Lot. No.** (See product label)

SPECIFICATION

Product Overview	Human MGC15730 partial ORF (NP_116269, 201 a.a. - 300 a.a.) recombinant protein with GST-tag at N-terminal.
Species	Human
Source	Wheat Germ
Description	This gene encodes a protein which has two immunoglobulin (Ig) domains and is a member of the immunoglobulin superfamily. Proteins in this superfamily are usually found on or in cell membranes and act as receptors in immune response pathways. [provided by RefSeq, Sep 2011]
Molecular Mass	36.74 kDa
AA Sequence	ASSGPLQDSRPFRSLLHRDLDDTKMQKSLSLDAENRGGRPYTERPSRGLTPDPNILLQPTTENIPETVVSREFPRWVHSAEPTYFLRHSRTPSSDGTVE
Applications	Enzyme-linked Immunoabsorbent Assay Western Blot (Recombinant protein) Antibody Production Protein Array
Notes	Best use within three months from the date of receipt of this protein.
Storage	Store at -80 centigrade. Aliquot to avoid repeated freezing and thawing.

 Tel: 1-631-559-9269 1-516-512-3133

 Email: info@creative-biomart.com  Fax: 1-631-938-8127

 45-1 Ramsey Road, Shirley, NY 11967, USA

Storage Buffer 50 mM Tris-HCl, 10 mM reduced Glutathione, pH=8.0 in the elution buffer.

GENE INFORMATION

Gene Name IGSF21 immunoglobulin superfamily, member 21 [Homo sapiens]

Official Symbol IGSF21

Synonyms IGSF21; immunoglobulin superfamily, member 21; immunoglobulin superfamily member 21; MGC15730; RP11 121A23.1; FLJ41177;

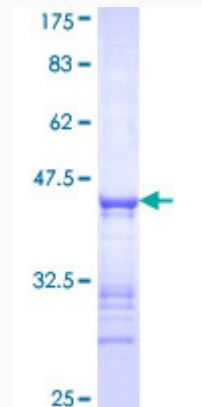
Gene ID 84966

mRNA Refseq NM_032880

Protein Refseq NP_116269

UniProt ID Q96ID5

Quality Control Testing



12.5% SDS-PAGE Stained with Coomassie Blue

Tel: 1-631-559-9269 1-516-512-3133

Email: info@creative-biomart.com Fax: 1-631-938-8127

45-1 Ramsey Road, Shirley, NY 11967, USA